

# PERRY

Chamber of Commerce



2018 Visitor Guide and Member Directory

# PERRY CHAMBER

1124 Willis Ave., Suite A  
515-465-4601  
perrychamber@perryia.org  
www.perryia.org



## November

- Chili Feed
- Art on the Prairie
- Lighted Christmas Parade

## December

- Poste Print Festival

## February

- BRR Ride
- Chocolate Walk

## May

- Antique Days
- Fiber Art

## June

- Friday Fest

## July

- July 4th Celebration

## August

- Perry Cruuze Show

## September

- Homecoming Parade
- Art Harvest Tour

Enjoy these, and many more events in Perry!

*CRAVE CULTURE? VISIT PERRY, IOWA!*



# Table of Contents

<b>Chamber</b>	<b>4-6</b>
<b>Perry Chamber Directory and Application</b>	<b>8-18</b>
<b>So Many Things To Do</b>	<b>19-28</b>
<b>Cultural Attractions</b>	<b>29-34</b>
<b>Parks, Trails &amp; Recreation</b>	<b>35-38</b>
<b>Calendar of Events</b>	<b>40-43</b>
<b>Advertiser's Index</b>	<b>45</b>
<b>Area Maps</b>	<b>46-47</b>

Published for the Perry Area Chamber of Commerce by Perry Chief, Perry, Iowa

The events, location, dates, and times presented in this guide may change. Additional events may be added throughout the year. We invite you to visit our website, [www.perryia.org](http://www.perryia.org), for event changes and additional attractions or, if driving through Perry, check our kiosk at the Perry Welcome Depot.

Contents ©2017 Perry Chief All rights reserved. Nothing may be reprinted in whole or in part without the expressed written permission of the publisher.

Please report errors and omissions to 515-465-4601.

## Thank You!

- **To the many businesses who advertise in this book. Without the vibrant business community, Perry would not be what it is.**
- **To the Perry Chief for use of their photographs and for producing this book.**

# Chamber of Commerce & Member Directory

## Mission Statement:

To promote and improve the business environment, stimulate a vibrant local economy and produce a cooperative effort to enhance the overall quality of life.

## What is a Chamber of Commerce?

A Chamber of Commerce is a voluntary organization. It unites business and professional leaders and firms, thus creating a central agency which lends itself to improving and promoting business and building a better community.

It must be understood that a Chamber of Commerce is the people. There is a place in the Chamber for all who share the desire to improve the community and the conditions under which business is conducted. It directs the energies of those who believe that a community worth living in is a community worth improving!

Today, Chambers of Commerce have become organizations for the total community. Currently, the successful Chamber of Commerce is the one which recognizes all the factors which impact the community and adjusts its programs accordingly.

A Chamber of Commerce is not . . . a department of the city, county or state government; a civic club or professional society; a social, service, welfare or charitable institution; a private advertising, publicity or public relations agency.

## How does the Perry Chamber of Commerce Function?

Just as the ultimate corporate responsibility is to the stockholder, the Perry Chamber of Commerce differs only in the terminology. It is responsible to its membership.

Functionally, the Perry Chamber of Commerce has a Board of Directors elected from its membership. From committee and membership recommendations, the Board determines Chamber policy.

The activities of the Perry Chamber of Commerce can partially be enumerated by reviewing its committees and membership. The activities of the committees and membership are channeled into the Chamber Board of Directors and coordinated by professional staff.

The Perry Chamber of Commerce depends on the financial investments of its members as well as support through annual fundraisers.

## Your money . . .

. . . assists in the Chamber's progress. The annual membership investment does not represent a contribution to the Perry Chamber of Commerce. It is a legitimate business expense and therefore, is tax deductible to the extent allowed by law. It's an investment for which the return is the continued growth and prosperity of Perry.

## Membership Value

There are many valuable reasons to join your local Chamber of Commerce.

There are over 150 members in the Perry Chamber and each has their own purpose for becoming involved. The following are KEY incentives for becoming a member of the Chamber of Commerce

## Website

All members are represented on our chamber website at [www.perryia.org](http://www.perryia.org) that also allows us to link your site to ours so interested individuals can access your information.

## Referrals

The chamber members are priority when it comes to referrals through incoming calls, promotional materials, newsletter and our website.

## Brochure Display & Signage

Display your brochures in the chamber office and the "Welcome Depot" to better increase exposure for your place of business. The Chamber also provides a window cling that identifies you as a chamber member and your interest in community betterment and lets customers know where they can spend their Perry Bucks.

## Events & Promotions

The Chamber has several opportunities to participate in chamber sponsored events or have your business involved by volunteering, sponsorship potential, donations of supplies or for raffle prizes.

## Annual Chamber Dinner

The dinner offers you the ability to stay up to date on chamber activities while networking and socializing with fellow members.

### Chamber Interaction

The chamber works with other local organizations to benefit the entire business community. We also connect with Iowa Chamber of Commerce Executives (ICCE) to attain the best practice policies and innovative ways to improve our services to our membership.

### Educational Programs

Seminars or Lunch/Learns sponsored by the Chamber assist with your businesses continued growth and sustainability of the economic flow.

### Perry Bucks Program

The Chamber issues an average of \$56,000 in Perry Bucks annually. As chamber members, all of these "Bucks" are spent at your place of business in an effort to keep money spent locally and revenue growth in our community.

### Tourism

The Chamber sponsors annual events to attract tourism dollars to Perry and your business. The Chamber partners with Des Moines CVB to attract tour groups and visibility through regional venues.

### Chamber Spot

The Chamber sponsors the weekly radio program with KDLS, during which the chamber promotes chamber businesses, chamber events and other community events of interest.

### Chamber Member Directory/ Tourism Guide

In production since 2009, the chamber develops a Chamber Member Directory/Tourism Guide with the entire contact information of each member. Chamber members receive a discount for advertising in this promotional tool. The Guide will also feature day-trip itineraries for visitors and residents alike that crave diverse activities such as recreation, shopping, dining and history.

### Perry Cultural District

The Chamber looks at resourceful ways to develop our Cultural & Historic District as a destination place while creating an inviting atmosphere for people to gather and experience an inspiring culture. We work with retail/business groups for innovative ideas to attract tourism in the downtown district and get maximum exposure.

### Town Craft Partnership

The Chamber of Commerce, City, Perry Economic Development and Town Craft Center continually collaborates to create new innovative ways to create community development consisting of regional tourism, SHOP local campaign, downtown storefront cleanup, & Cultural Coop initiative.

### Hotel/Motel Tax 28E Agreement

4% of the 7% hotel tax revenue goes to the Chamber of Commerce that has assisted with our communal website, promote local events, market Perry as a destination, as well as the ability to renovate the old Railroad Depot into a Welcome Depot.

### "Iowa Great Places"

Perry became one of "Iowa Great Places" in 2007 with our vision and growth in the downtown Revitalization, cultural and educational opportunities, Raccoon River Valley Trail and Brownfield development.



**Enter The Nostalgic World of The Original "Five and Dime"!**

M-F 9 am -7 pm Sat 9 am-5 pm  
Sun Noon-4 pm

<p><b>Ben Franklin Variety</b>                  Gifts • Silk Flowers • Cards                  Crafts • Hobby Supplies                  Candy • Seasonal Decor                  Baby Merchandise                  Nostalgic Toys</p>	<p><b>Framemeister</b>                  Custom Framing Ready-made                  Frames Unique Gifts</p> <p><b>Pattee Dry Goods</b>                  Fabric • Yarn • Sewing                  Accessories</p>
---	--

**Ben's Five & Dime**

**1221 2nd St.  
Perry  
515-465-4825**

**A Quilter's Dream!**



# PERRY CHAMBER

## Officers & Directors

### Officers

**Emily Leslie**  
 President  
 Backwards Properties, LLC

**Macinzie McFarland**  
 Vice President  
 Dallas County Hospital

**Matt Rohe**  
 Hy-Vee

**Clark Wicks**  
 Perry Community School District

**Andrew Brommer**  
 Edward Jones

**Kelsey Hughes**  
 Raccoon Valley Bank

**Susie Moorhead**  
 Treasurer  
 City of Perry

**Chrissy VonBehren-Danger**  
 Past President  
 Accujet

**Lee Coons**  
 Raccoon River Valley Bicycle

**Shawn Kenney**  
 KDLS Radio

**Travis Landgrebe**  
 Fareway

**Misty VonBehren**  
 Perry Public Library

### Directors

### Office Staff

**Julie Scheib**  
 Administrative Assistant

## Hamlin-Bell Apartments

2023 Willis Avenue • Perry, IA 50220  
(515) 238-0271 • newburyliving.com

### Property Amenities

- \*Controlled Access Entry
- \*Community room with full kitchen, fitness and business centers
- \*Energy Efficient appliances throughout plus free WiFi
- \*2 Bedroom Apartments
- \*Ample Off-Street Parking
- \*Income Restrictions May Apply

### Apartment Amenities

- \*Fully Equipped Kitchens
- \*In-Home Laundry
- \*Flexible floorplan - 2nd bedroom



## Willis Avenue Apartments

913 Willis Avenue • Perry, IA 50220  
(515) 238-0271 • newburyliving.com

### Property Amenities

- \*Controlled Access Entry
- \*Community room with full kitchen
- \*Energy Efficient appliances throughout
- \*1 and 2 Bedroom Apartments and 4 Bedroom Townhomes
- \*Ample Off-Street Parking
- \*Income Restrictions Apply

### Apartment Amenities

- \*Fully Equipped Kitchens
- \*In-Home Laundry
- \*Open Concept Floor Plans



# Perry Area Chamber of Commerce Member Directory

Contact the Chamber at:  
1124 Willis Avenue, Perry, IA 50220  
515.465.4601  
[www.perryareachamberofcommerce.com](http://www.perryareachamberofcommerce.com)

## Automotive

### Clean Works Auto Wash and Clean Paws Pet Wash

1201 1st St., Perry, IA 50220  
(515) 676-2209  
[www.cleanworksautowash.com](http://www.cleanworksautowash.com)

### Four Seasons Car Wash/Storage

3001 Willis Ave., Perry, IA 50220  
(515) 465-5651

### McKee Auto & RV

Hwy 141 & 144, Perry, IA 50220  
(515) 465-3564  
[www.mckeeauto.com](http://www.mckeeauto.com)

### Motor Kars II

802 1st St., Perry, IA 50220  
(515) 465-5066

### NAPA Auto Parts

1001 3rd St, Perry, IA 50220  
(515) 465-4615

### Peters Service Center

98 W Willis Ave., Perry, IA 50220  
(515) 465-5651

### Quality Services Corp.

1205 Diagonal Rd., Perry, IA 50220  
(515) 465-4020

## Ag Related

### American Association of Swine Veterinarians (AASV)

830 26th St., Perry, IA 50220  
(515) 465-5255  
[www.aasv.org](http://www.aasv.org)

### Farm Credit Services of America

Hwy 141 & Willis, Perry, IA 50220  
(515) 465-5318  
[www.fcsamerica.com](http://www.fcsamerica.com)

### Landus Cooperative

2229 Clover Ave., Box 305, Perry, IA 50220  
(515) 465-3516

### Quick Oil Company (LP/Fuel Oil)

104 Willis Ave., Perry, IA 50220  
(515) 465-4994 (800) 4754994  
[www.quickoil.iwarp.com](http://www.quickoil.iwarp.com)

### Van Wall Equipment

Hwy 141 East, Perry, IA 50220  
(515) 465-5681  
[www.vanwall.com](http://www.vanwall.com)

### Veterinary Medical Associates

2821 E. Willis Ave., Perry, IA 50220  
(515) 465-3581  
[www.vetmedassoc.com](http://www.vetmedassoc.com)

### Whiterock Conservancy (WRC)

1390 Hwy 141, Coon Rapids, IA 50058  
(712) 684-2697  
[www.whiterockconservancy.org](http://www.whiterockconservancy.org)

## Contractors/Home Repair/ Portable Restrooms

### A Kings Throne

751 NE Broadway Ave, Des Moines, IA 50313  
(515) 288-5464

### AccuJet LLC

12155 J Ave., Perry, IA 50220  
(515) 360-8582



**Cornerstone Homes**

(515)-984-0222  
www.cornerstonehomesia.com

**Dan's Heating & Cooling**

906 3rd. St., Perry, IA 50220  
(515) 465-4677

**Harland Concrete LLC**

13401 M Ave., Perry, IA 50220  
(515) 979-2489  
www.harlandconcrete.com

**Hulgan Plumbing & Heating**

801 1st St., Perry, IA 50220  
(515) 465-3030

**Midwest Poly Coatings Plus**

1324 Dewey St., Perry, IA 50220  
(515) 422-4198  
www.midwestpolycoatingsplus.com

**No Lawn Left Behind**

1375 Partridge Trail, Perry, IA 50220  
(515) 465-4383  
www.nolawnleftbehind.us

**Rainbow Int'l Restoration & Cleaning**

2901 Willis Ave., Perry, IA 50220  
(515) 465-4325  
www.rainbowintl.com

**Financial / Insurance /  
Legal & Real Estate**

**Bernie Lowe & Associates**  
1555 SE Delaware Ave. Suite A, Ankeny, IA 50021  
(515) 964-5502  
www.bernielowe.com

**Edward Jones**

1209 2nd St., Perry, IA 50220  
(515) 465-5336  
www.edwardjones.com

**Family Credit Union**

720 1st Ave., Perry, IA 50220  
(515) 465-5180  
www.familycu.com

**Farm Bureau Financial Services**

1009 Willis Ave., Perry, IA 50220  
(515) 465-2005

**Generations Wealth Advisors- Vince Sturm**

1401 Willis Ave., Perry, IA 50220  
(515) 465-9843

**Finneseth, Dalen & Powell**

1401 Willis Ave., Perry, IA 50220  
(515) 465-4641

**Great Western Bank**

1111 141st St., Perry, IA 50220  
(515) 465-3187  
www.greatwesternbank.com


**H&R Block**

1317 2nd St., Perry, IA 50220  
(515) 465-5114  
www.hrblock.com

**Haaland Financial Services**

1126 2nd St., Perry, IA 50220  
(515) 465-9100

**Bank with Us,  
Anytime, Anywhere!**




- check balances
- transfer funds
- deposit checks
- pay bills
- pay people
- find the nearest ATM

...all with our convenient Mobile App!  
search Raccoon Valley Bank

Download on the  
**App Store**

GET IT ON  
**Google Play**



www.raccoonvalleybank.com

**@RVBiowa**

**@raccoonvalleybank**

**Melodie Whiton**  
**State Farm Insurance**  
 900 1st St., Perry, IA 50220  
 (515) 465-3862  
 www.statefarm.com

**Meriwether Wilson & Co.**  
 1307 2nd St., Perry, IA 50220  
 (515) 465-3591  
 www.mwpcpl.com

**Nevitt Real Estate**  
 702 1st Ave., Perry, IA 50220  
 (515) 465-2200  
 www.perryiowahomes.com

**Raccoon Valley Bank**  
 1202 2nd St., Perry, IA  
 (515) 465-3521  
 www.raccoonvalleybank.com

**ReMax Pros on Main**  
 1207 2nd St., Perry, IA 50220  
 (515) 465-5000  
 www.remaxperry.com

**Re/Max Concepts Torres Team**  
 905 N. Bridge Rd., Polk City, IA 50226  
 (515) 291-3728  
 zack.sellingcentralia.com

**RHC Iowa Realty - RHC Insurance**  
 1106 Willis Ave., Perry, IA 50220  
 (515) 465-4686  
 www.rhciowarealty.com

**Roberts-Smiley Agency**  
 609 1st St., Perry, IA 50220  
 (515) 465-4101

**Trey Sucher Law**  
 1113 2nd St., Perry, IA 50220  
 (515) 726-1889

**Wells Fargo Bank**  
 1224 1st Ave., Perry, IA 50220  
 (515) 465-5611  
 www.wellsfargo.com

**Funeral Homes**

**Carris Family Funeral Home**  
 1721 Park St., Perry, IA 50220  
 (515) 465-8100  
 www.carrisfuneralhome.com

**Hastings Funeral Home**  
 1417 2nd St., Perry, IA 50220  
 (515) 465-4691  
 www.funeralplan.com/hastingsfh

**Murdock Funeral Home**  
 1420 Warford St. Perry, IA 50220  
 (515) 465-2974  
 www.murdockfuneralhome.net

**Government / Schools  
 Utilities / Transportation**

**Alliant Energy**  
 Otley Ave., Perry, IA 50220  
 (800) 255-4268  
 www.alliantenergy.com



**Better Business Bureau**

615 Insurance Exchange Bldg.  
5th & Grand, Des Moines, IA 50309  
(800) 955-5100  
www.bbb.org

**City of Perry**

1102 Willis Ave., Perry, IA 50220  
(515) 465-2481  
www.perryia.org

**Des Moines Area Community College (DMACC)**

**Van Kirk Career Academy**

1011 2nd St., Perry, IA 50220  
(515) 428-8100  
www.dmaccedu

**Iowa State University Extension –  
Dallas County**

28059 Fairground Rd., Adel, IA 5003  
(515) 993-4281  
www.extension.iastate.edu/dallas/

**Mediacom**

225 S. Dayton, Ames, IA 50010  
(800) 262-3843  
www.mediacomcc.com

**Metro Waste Authority**

300 E Locust St., Suite 100, Des Moines, IA 50309  
(515) 244-0021  
www.mwatoday.com

**Mid-American Energy**

PO Box 657, Des Moines, IA 50304  
(515) 242-4300  
www.midamerican.com

**Minburn Communications**

224 4th St., Minburn, IA 50167  
(515) 677-2264  
www.minburncomm.com

**Pegasus Channel 12**

1014 2nd St., Perry, IA 50220  
(515) 465-3793  
pegasustv12@iowatelecom.net

**Perry Community Schools  
Administration**

1102 Willis, Perry, IA 50220  
(515) 465-4656  
www.perry.k12.ia.us

**Perry Community Schools  
Elementary School**

1600 8th St., Perry, IA 50220  
(515) 465-5656

**Perry Community Schools  
High School**

1200 18th St., Perry, IA 50220  
(515) 465-3503

**Perry Community Schools  
Middle School**

1200 18th St., Perry, IA 50220  
(515) 465-3531

**Perry Industries**

PO Box 8, Perry, IA 50220  
(515) 465-5611  
www.perryeconomicdevelopment.com

**St. Patrick School**

1032 5th St., Perry, IA 50220  
(515) 465-4186  
www.stpatricks-perry-ia.org

**Walter Aviation-  
Perry Airport**

14381 Galveston Ct., Perry, IA 50220  
(515) 465-3970

**Grocery / Convenience /  
Drug Stores**

**Casey's East**

2617 Willis, Perry, IA 50220  
(515) 465-9961  
www.caseys.com

**Casey's West**

1308 First St., Perry, IA 50220  
(515) 465-4947

**Fareway Stores Inc.**

1315 Willis Ave., Perry, IA 50220  
(515) 465-3411

**Hy-Vee Food Stores & Pharmacy**

1215 141st St., Perry, IA 50220  
 (515) 465-5321  
 www.hy-vee.com

**Kum & Go**

1115 Hwy 141, Perry, IA 50220  
 (515) 465-4433  
 www.kumandgo.com

**Kum & Go**

1219 1st St., Perry, IA 50220  
 (515) 465-7130  
 www.kumandgo.com

**Medicap Pharmacy**

601 S. 1st St., Perry, IA 50220  
 (515) 465-3391  
 www.medicap.com

**Panaderia Mexico**

1114 2nd St., Perry, IA 50220  
 (515) 465-7172

**Shopko Pharmacy**

1305 141st St., Perry, IA 50220  
 (515) 465-5484

**Health Care Services**

**21st Century Rehab**

PO Box 608, Perry, IA 50220  
 (515) 465-7672  
 www.21stcenturyrehab.com

**Central Iowa Foot Clinic**

2718 Willis Ave., Perry, IA 50220  
 (515) 465-4821  
 www.centraliowafoot.com

**Dallas County Hospital**

610 10th St., Perry, IA 50220  
 (515) 465-3547  
 www.dallascohospital.org

**Eye Care Associates**

1313 2nd St., Perry, IA 50220  
 (515) 465-4203

**Family Health and Wellness**

403 First Ave., Perry, IA 50220  
 (515) 465-3585

**Finn & Laughlin Family Dentistry**

16th & Iowa St., Perry, IA 50220  
 (515) 465-2633  
 www.finnfamilydentistry.com

**HCI Care Services of Central Iowa**


402 12th St., Perry, IA 50220  
 (515) 465-4705  
 www.hospiceofcentraliowa.org

**Mercy-Family Care**

616 10th St., Perry, IA 50220  
 (515) 465-3553  
 www.uihealthcare.com

**Perry Family Dentistry**

1020 Otley, Perry, IA 50220  
 (515) 465-3501



**BODY & FRAME  
 GLASS WORK  
 PAINTLESS  
 DENT REMOVAL  
 AUTO DETAILING**

*Insurance Work • Free Estimates*

**Wuebker's**  
 Auto Body Shop LLC

1120 West Third • Perry, IA • 515-465-5112



**Human Services**

**Crisis Intervention & Advocacy Center**

1111 2nd St., PO Box 40, Adel, IA 50003  
 (515) 993-4095  
 (800) 400-4884

**Genesis Development**

610 10th St., Perry, IA 50220  
 (515) 465-7541

**New Hope Village**

**Bargain Shoppe**

912 Center St., Perry, IA 50220  
 (515) 465-2117  
 www.newhopevillage.org

**New Opportunities, Inc**

**Dallas County Family Development Center**

1212 2nd St., PO Box 606, Perry, IA 50220  
 (515) 465-5185  
 www.Newopp.org

**Perry Child Development Center**

920 18th St., Perry, IA 50220  
 (515) 465-2522

**Partners in Family Development**

1109 2nd St., Perry, IA 50220  
 (515) 465-2584  
 partnersinfamilydevelopment.org

**Manufacturers / Industry**

**ITC Midwest LLC**

507 Research Dr., Perry, IA 50220  
 (319) 364-6600  
 www.itctransco.com

**Percival Scientific, Inc.**

505 Research Dr., Perry, IA 50220  
 (515) 465-9363  
 www.percival-scientific.com

**Progressive Foundry**

1518 1st St., Perry, IA 50220  
 (515) 465-5697  
 www.progressivefoundry.com

**Tyson Fresh Meats**

13500 I Ct., Perry, IA 50220  
 (515) 465-5363  
 www.tyson.com

**Wiese Industries Inc.**

1501 5th St., Perry, IA 50220  
 (515) 465-9854  
 www.wieseindustries.com

**Media / Promotion**

**Blue Rock Productions**

1728 Warford, Perry, IA 50220  
 (515) 681-9299  
 brpsoundandlight@gmail.com

**Raccoon Valley Radio -KDLS**

2260 141st Dr., Perry, IA 50220  
 (515) 465-5357  
 www.raccoonvalleyradio.com

**Dallas County News, Inc.**

1316 2 nd St., Suite B, Perry, IA 50220  
 (515) 465-4666  
 www.adelnews.com

**Graphics 2U**

2710 Willis Ave., Perry, IA 50220  
 (515) 465-4271  
 www.graphics2u.com

**Looking for Better Living?**

**Independent Living**  
**Assisted Living** **Health Care**

**ROWLEY**  
 MASONIC COMMUNITY  
 1300 28th St. Perry  
 515.465.5316

**Hanson Directory**

PO Box 786, Newton, IA 50208  
 (800) 622-0034  
[www.hansondirectory.com](http://www.hansondirectory.com)

**Perry Chief Newspaper**

1316 2nd St. Suite B, Perry, IA 50220  
 (515) 465-4666  
[www.theperrychief.com](http://www.theperrychief.com)

**Perry Living Magazine**

414 61st St., Des Moines, IA 50312  
 (515) 953-4822  
[www.iowalivingmagazine.com/perry](http://www.iowalivingmagazine.com/perry)

**ThePerryNews.com**

P.O. Box 382, Perry, IA 50220  
 (515) 661-7600  
[theperrynews.com](http://theperrynews.com)

**Yellow Book USA**

2021 3rd Ave. S.E., Cedar Rapids, IA 52401  
 (800) 929-3556  
[www.yellowbook.com](http://www.yellowbook.com)

**Non-Profit Organizations****Perry Elks Lodge #407**

2823 Willis Ave., Perry, IA 50220  
 (515) 465-3791

**Freedom for Youth- Perry**

1210 2nd St., Perry, IA 50220  
 (515) 282-4822  
[www.freedomforyouth.org](http://www.freedomforyouth.org)

**Friends of the Perry Library**

1101 Willis Ave., Perry, IA 50220  
 (515) 465-3569  
[www.perrylib.ia.us](http://www.perrylib.ia.us)

**Hispanics United for Perry (HUP)**

1312 3rd St., Perry, IA 50220  
 (515) 490-2298

**Humane Society of Perry Inc.**

1419 Ivy Pl., Perry, IA 50220  
 (515) 480-8059  
<http://www.petfinder.com>

**Perry Fine Arts**

1100 3rd St., Box 237, Perry, IA 50220  
 (515) 465-4782

**Churches****Crossroads Church**

2810 1st St., Perry, IA 50220  
 (515) 465-5478

**First Baptist Church**

1220 4th St., Perry, IA 50220  
 (515) 465-4669  
[www.fbcperryia.org](http://www.fbcperryia.org)

**First United Methodist Church**

1100 3rd St., PO Box 237, Perry, IA 50220  
 (515) 465-4178

**First Christian Church/ EDGE**

1224 Lucinda St., Perry, IA 50220  
 (515) 465-2215  
[www.perryfcc.org/edge-cyf.html](http://www.perryfcc.org/edge-cyf.html)

**Professional****Access Systems IT**

1050 SE Olson Dr., Waukee, IA 50263  
 (515) 987-6227  
[www.accesssystems.net](http://www.accesssystems.net)

**Bolton & Menk Engineers & Surveyors**

2730 Ford Ford St., P.O. Box 668, Ames, IA 50010

**Kading Properties**

7008 Madison Ave., Urbandale, IA 50322  
 (515) 276-9384

**Midwest Best Auction Services**

840 26th St., Perry, IA 50220  
 (515) 465-5780  
[www.mwbestauctions.com](http://www.mwbestauctions.com)

**Showtime Studio**

1108 2nd St., Perry, IA 50220  
 (515) 465-5018

**Travel Simplified**

PO Box 622, Perry, IA 50220  
 (515) 465-3465  
[www.travelsimplified.net](http://www.travelsimplified.net)

## Restaurants / Hotels Bars / Event Venues

### Casa de Oro

1211 Second St., Perry, IA 50220  
(515) 465-8808

### Crooked Rail

1010 2nd St., Perry, IA 50220  
(515) 465-4416

### El Buen Gusto

1209 2nd St., Perry, IA 50220  
(515) 465-5183

### Hotel Pattee

1112 Willis Ave., Perry, IA 50220  
(515) 465-3511  
www.hotelpattee.com

### River Valley Catering

1925 16th St., Perry, IA 50220  
(515) 371-7783

### Mandarin Café

1117 2nd St., Perry, IA 50220  
(515) 465-2080

### Metro Buffet

405 1st St., Perry, IA 50220  
(515) 465-9888

### Perry Perk

1218 2nd St., Perry, IA 50220  
(515) 897-8035

### Taqueria Villa

1319 2nd St., Perry, IA 50220  
(515) 465-4266

## Recreation / Fitness

### McCreary Center

1800 Pattee St., Perry, IA 50220  
(515) 465-5621  
www.perryia.org

### Perry Golf & Country Club

Hwy 144, Perry, IA 50220  
(515) 465-3852  
www.perrygolf.com

### Raccoon River Valley Trail Association (RRVTA)

402 Main St., Suite 1, Cooper, IA 50059  
(515) 386-5488  
www.raccoonrivervalleytrail.org

### Raccoon Valley Bicycle Co.

1118 Willis Ave., Perry, IA 50220  
(515) 577-3379  
www.bikeperry.com

### Snap Fitness

509 1st St., Perry, IA 50220  
(515) 465-2848  
www.snapfitness.com/perry

## Retail

### Alice's Haus Dresin Ltd.

924 Otley, Perry, IA 50220  
(515) 465-4750

### Bacon Jewelers

1213 2nd St., Perry, IA 50220  
(515) 465-2991

### Ben's Five & Dime

1221 2nd St., Perry, IA 50220  
(515) 465-4825

### Betsy Peterson Designs

1121 Second St., Perry IA 50220  
(515) 657-1837

### Bits of Technology

1020 26th St., Perry, IA 50220  
(515) 465-3043  
www.bitsoftechnology.com

### BRG Music of Perry

1209 2nd St., Perry, IA 50220  
(515) 465-7710  
www.brgmore.com

### Cellular Advantage

526 1st St., Perry, IA 50220  
(515) 465-7883  
www.cellularadvantage.com

**Creations Unlimited**

Perry, IA 50220  
(515) 465-4095

**Grand Theater**

1312 2nd St., Perry, IA 50220  
(515) 465-4262

**Harland Ace Hardware**

628 1st Ave., Perry, IA 50220  
(515) 465-2177  
www.acehardware.com

**Mary Rose**

1215 Warford, Perry, IA 50220  
(515) 465-4222  
www.maryrosecollection.com

**Orscheln Farm & Home**

401 1st. Ave., Perry, IA 50220  
(515) 465-5311  
www.orschelnfarmhome.com

**Perry Floral & Gifts**

1215 2nd St., Perry, IA 50220  
(515) 465-3539  
(800) 348-5264

**Perry Greenhouse & Supplies**

1620 Pattee St., Perry, IA 50220  
(515) 465-3539

**Perry Paint & Glass**

1216 2nd St., Perry, IA 50220  
(515) 465-4472  
www.perrypaintandglass.com

**Prairie Girls**

1104 2nd St., Perry, IA 50220  
(515)-216-4797

**Scottish Fox**

1118 2nd St., Perry, IA 50220  
(515) 971-3350

**Shopko**

1305 141 St., Perry, IA 50220  
(515) 465-5271  
www.shopko.com

**Stokely Lumber**

1040 26th St., Perry, IA 50220  
(515) 465-3571

**Senior Living****Perry Lutheran Home**

2323 Willis Ave., Perry, IA 50220  
(515) 465-5342

**Spring Valley Assisted Living**

501 12th St., Perry, IA 50220  
(515) 465-7501  
www.springvalleyassistedliving.org

**Rowley Masonic Home**

3000 Willis Ave., Perry, IA 50220  
(515) 465-5316  
www.rowleymasonichome.org

**Individual Members**

Emily and Dan Leslie

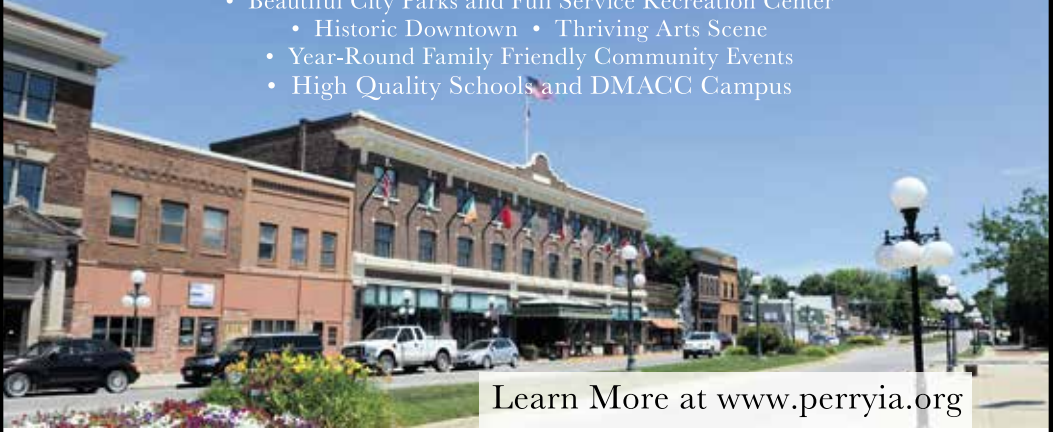






## 10-YEAR TAX ABATEMENT FOR NEW CONSTRUCTION

- Easy 30 minute commute on Highway 141 to Metro
- Beautiful City Parks and Full Service Recreation Center
  - Historic Downtown • Thriving Arts Scene
- Year-Round Family Friendly Community Events
- High Quality Schools and DMACC Campus



### Improvements or Rehabilitation

Improvements made to existing residential properties which increase the actual assessed value of the qualified real estate by at least \$20,000 for residential properties and 15% for multi-family residential properties will be eligible for the City of Perry's 5-year Tax Abatement Program. Taxes will be abated 100% for the first five years, on only the improved value.

### New Construction

New homes that satisfy qualification requirements are eligible for the City of Perry's 10- year Tax Abatement Program. Taxes will be abated 100% for the first five years, the following five years, taxes will be phased in at a rate of 15% per year.

**Contact City Hall  
at 515-465-2481 or Visit  
[www.perryia.org/tax-abatement](http://www.perryia.org/tax-abatement)  
for more information**

# Perry Area Chamber of Commerce

## Membership Application

Business Name: \_\_\_\_\_

Physical Address: \_\_\_\_\_

Mailing Address: \_\_\_\_\_

Phone: \_\_\_\_\_ Fax: \_\_\_\_\_

Email Address: \_\_\_\_\_

Web Address: \_\_\_\_\_

Date Established: \_\_\_\_\_

In a paragraph, please give a brief description of your business:

\_\_\_\_\_

\_\_\_\_\_

\_\_\_\_\_

\_\_\_\_\_

### Employment Information

# of Full-time Employees: \_\_\_\_\_ # of Part-time Employees: \_\_\_\_\_

Primary Representative/Title: \_\_\_\_\_

\*Also the name of the individual whom you wish to designate as having the one member, vote procedures.

Amount of Annual Dues:\$ \_\_\_\_\_

I wish to pay: Annually \_\_\_\_\_ Semi-Annually \_\_\_\_\_ Quarterly \_\_\_\_\_

\*Note: There will be a \$5.00 service fee per invoice produced.

Signature: \_\_\_\_\_ Date: \_\_\_\_\_

# So Many Things To Do

## Arts and Culture: Perry's Creative Way of Life

Perry is a community where visitors and residents can enjoy a wealth of exploration opportunities through local festivals, art and artisans, architecture, history, and recreational opportunities.

Start your visit to Perry at the historic Soumas Court, located between the Hotel Pattee and the Town/Craft Center on Willis Avenue. This shaded pedestrian alley, named for local hero George Soumas, is a quiet spot where visitors are encouraged to reflect on times past and enjoy the ease of small town living. Pull up a chair and share a cup of coffee with George himself (actually a bronze sculpture by Iowa artist Chris Bennett) and then scan the clay-tiled Wall of Witnesses to learn more about individuals who have made unique contributions to this community's heritage.

Take particular note of the gateways on either end of Soumas Court. Designed by world-renowned sculptor Albert Paley, this pair of arches is titled Reconfiguration—an indication of what the artist believes happens to visitors who take time to consider the past as it affects our future. The sculptures, weighing in at nearly eight tons apiece, are constructed using metal objects that held a particular significance in the lives of the metalworkers, farmers and railroaders who came before us.

Venture across Willis Avenue, and step back in time as you pass through the doors at the fully-restored Carnegie Library Museum. Listed on the National Register of Historic Places, this monument to literacy and philanthropy commemorates the importance public libraries have held in communities across the country. The Carnegie Museum underwent an extensive renovation in 2003 and houses various collections of materials with local significance.

As a point of comparison, follow up your tour of the Carnegie with a visit to the modern, state-accredited public library next door. The Perry Public Library offers computer access, wireless internet, popular books, music, newspapers and magazines, as well as special programs and events throughout the year. Perry Public Library, 1101 Willis Avenue, Perry. 515-465-3569; [www.perry.lib.ia.us](http://www.perry.lib.ia.us)

New to Perry are two sculptures, of a four part series, on the "Boulevard" on Willis Avenue between First and Third Streets. Arriving in the spring of 2017, Born of Fire,

is a tribute to Pete VanKirk of Progressive Foundry and his contributions to Perry. Created by artist John Brommel, Born of Fire looks like hot, molten metal pouring out of a crucible. Lit at night with red and orange lighting, this sculpture truly looks like it's on fire.

The Iowa Girl sculpture, also created by John Brommel, pays tribute to Roberta Ahmanson, who played a huge part in bringing many downtown Perry buildings back to life. Iowa Girl was unveiled in November of 2017 and has blue/green lighting.

The final two sculptures will take on the theme of agriculture and the railroad, two aspects of Perry that have encouraged economic and community growth.

Downtown Perry offers two other spots where arts-minded travelers can view collections of works by Midwestern artists. The historic Hotel Pattee is filled from top to bottom with paintings, sculptures and other artifacts that will interest anyone with an eye for unique craftsmanship. Tours of the rooms and the public spaces can be arranged. Visitors are urged to call the hotel for

OUR FAMILY  
SERVING  
YOURS SINCE 1953

---

AUTO • HOME • BUSINESS  
**INSURANCE**



North Star  
MUTUAL INSURANCE COMPANY



UNITED FIRE GROUP<sup>SM</sup>



GRINNELL MUTUAL  
REINSURANCE SINCE 1888



BBB

**Brett Roberts**  
Owner/Agent



---

Roberts-Smiley Agency

609 First Ave., Perry, IA

515-465-4101 or 515-465-5840

details. Hotel Pattee, 1112 Willis Avenue, Perry. 515-465-3511; [www.hotelpattee.com](http://www.hotelpattee.com)

The original Security Bank Building, now home to the Perry Community Schools Administrative Offices and the City of Perry offices, is another beautifully-restored Arts and Crafts showcase. Numerous paintings and photographs line the walls of this public building. Stop in during the week to view these works, or call to make arrangements for a special tour. Perry Chamber of Commerce, 1124 Willis Avenue, Perry. 515-465-4601; [www.perryia.org](http://www.perryia.org)

If you're interested in acquiring artwork of your own, you'll want to check out some of the area's favorite shops, all conveniently located nearby. One such shop, called Mary Rose, is housed in a historic telephone operator building at 1215 Warford Street. The store offers a selection of handcrafted items and gifts for the home. At 1121 Second Street, you will find the studio and gallery of local artists Betsy and Eric Peterson. Eric is a master potter and Betsy is a mixed-media folk artist. Alice's Haus Dresin, located at 924 Otley Avenue, showcases furniture and interior design products to aid you in transforming your special space.

Budding artists looking to create tomorrow's treasures won't want to miss the local Ben's Five & Dime store,

1221 Second Street, which stocks the area's best selection of fabrics, artist tools and scrapbooking supplies. Perry Paint & Glass, at 1216 2nd Street, is a "one stop" retail source for interior design services and has now added re-purposed and re-designed pieces to compliment any décor. Wenger Auction Showroom at 1323 2nd Street, is packed with antiques, collectibles and amazing treasures, just waiting for your discovery!

Contact information for these and other shops can be found in the "Chamber Directory" section of this guide.

Sightseers leaving the city proper, will be rewarded for their efforts when they visit the Forest Park Museum on the south edge of Perry. Popular exhibits teach visitors about the area's railroading history, early settlers to the area and much more. Educational programs and tours are a recurring part of the museum's offerings, so call ahead or visit their website for the most current information. Dallas County Forest Park and Museum, 14581 K Avenue, Perry. 515-465-3577; [www.co.dallas.ia.us](http://www.co.dallas.ia.us).

### Family Friendly Fun in Perry

Start the day off by visiting Forest Park Museum, 14581 K Avenue in Perry. History comes alive when you explore the artifacts of Dallas County and enter the Alton Schoolhouse and the Grabenhorst Log Cabin. Admission to the museum is free to the public and open seasonally May 1 to October 31 with hours Monday through Friday from 8 a.m. to 4:30 p.m. and Saturdays, Sundays and Holidays from 1 to 4:30 p.m. The museum is open by appointment year round. Call 515-465-3577 or visit [www.conservation.co.dallas.ia.us](http://www.conservation.co.dallas.ia.us) for more details.

Take a break at Mandarin Cafe for ice cream located at 1117 Second Street. Or visit Perry Perk at 1218 Second Street for a fresh brewed coffee, latte or espresso as well as home baked goodies and sandwiches.

After lunch, grab the swimsuits and towels and head to the McCreary Community Center located at 1800 Pattee Street. During the summer, sit on the fenced-in patio while the kids cool off at the Splash Pad. An indoor pool with a tot dock, sauna, whirlpool, fitness equipment, full size gymnasium and lobby area are also accessible with membership or payment of the daily entrance fee all year long. Call 515-465-5621 for hours and prices.

### Outdoor Junkies

With Perry's expanding trail systems and growing number of outdoor enthusiasts, you will find great satisfaction by walking, running or biking along the in-town trail system as well as the Raccoon River Valley Trail. The 72 mile loop was completed in summer of 2013, making

**HOTEL PATTEE**

1112 Willis Ave  
Perry IA 50220  
Phone 515-465-3511  
[www.hotelpattee.com](http://www.hotelpattee.com)

*A Destination unto Itself!*

**Hotel • Indoor/Outdoor Dining • Lounge • Spa  
Retreats • Corporate • Weddings • Bike Trails • Music**

the Raccoon River Valley Trail the largest continuous trail in the country. Currently you can find your way to Dawson and on the way... stop at the newly renovated Trestle Bridge to engage in nature and see one of the best views on the trail. Then continue west on the trail and as you enter Dawson, veer north onto a gravel road approximately ¼ of a mile to Sportsman's Park to rest and have a picnic while overlooking the North Raccoon River. The park also offers camping and has three enclosed shelter houses if you would like to stay overnight and enjoy a campfire with your friends. Two cabins are available for overnight rentals.

While you are there, take a short nature walk on a trail that follows the ridge top of the Raccoon River.

While you are in the outdoor mood, stop in to one of Perry's outdoor retailers. Located in the beautifully restored Ray B. Smith Museum Store at 1118 Willis Avenue, the Raccoon River Valley Bicycle Company is one of the most unique bicycle shops in Iowa. You are sure to find anything and everything you need to begin, or expand, your bicycling habit – one the whole family can enjoy.

Gather your things and head back east through Perry and into Forest Park Arboretum to stroll through their natural habitat, as it embodies over 100 different species of native trees, shrubs, woodland areas, re-established prairie and butterfly garden. The nature area was originally developed in the 1940's by Eugene Hastie, a farmer and local historian.

As you make your way back into the city, don't forget to stop at the Big Bike located at the Welcome Depot. This provides a perfect photo opportunity as well as a resting spot before you hit the in-town trails to grab a bite to eat at one of our authentic restaurants then continue your journey to the McCreary Recreation Center to play a game of Disc Golf. Enjoy a nine-hole course with three sets of tees for various levels... just pick up your scorecard, map, and Frisbee inside the recreation center and away you go!

If you are here for an extended stay and are dying for more of Mother Nature, rent or bring along your canoe and unload at the Perry Boat Ramp located at the west end of West Willis Avenue. Fill your cooler with your favorite beverage and lunch items then take your time as you enjoy a serene float down the Raccoon River while stopping along the way to enjoy lunch or a swim. Go approximately 7.5 miles to Snyder Access located in Minburn.

Gather your belongings and head to Voas Nature Area that is one-half mile east of the Raccoon River. Explore

the stone amphitheater, restored wetland areas and re-established prairie nursery. Also, climb to the observation deck that overlooks the oak and hickory forest and wildflowers. For more information on these outdoor adventures, go to the following: [www.perryia.org](http://www.perryia.org); [www.raccoonrivervalleytrail.org](http://www.raccoonrivervalleytrail.org); and [www.co.dallas.ia.us](http://www.co.dallas.ia.us).

## Fresh Flavors and Ethnic Delights: Fun for Foodies

The Perry area is rapidly becoming a food-lover's oasis in Central Iowa. Bring your appetite and a willingness to experiment and explore.

Start off your morning right. David's Milwaukee Diner, located in the Hotel Pattee, downtown Perry, offers hearty, traditional breakfast fare in a beautiful historic dining room. Quiches, omelets, pastries and more. You definitely won't leave hungry. David's Milwaukee Diner at the Hotel Pattee, 1112 Willis Avenue, Perry, IA 50220. 1-888-424-4268. [www.hotelpattee.com](http://www.hotelpattee.com)

Within easy walking distance of the Hotel on Second Street, you'll find two Latino markets. Perry's changing demographics create an increased demand for ingredients that our newest Iowans have been missing from their homelands. Savvy entrepreneurs have opened small-scale grocery stores and are finding enormous success. Stop

## Fishing for A New Financial!



### The Family Credit Union Is A Great Catch!

We have been your neighbor for over 80 years -  
We would love to lure you away.  
Find out about us at [www.familycu.com](http://www.familycu.com)



720 1st Avenue,  
Perry, Iowa  
563-388-8328



in and see a wide selection of meats and produce, along with spices, baked goods, snack foods, and other ingredients you won't find in your typical big-box grocery aisles.

Never tried Salvadorian food? Then you're in for a treat! El Buen Gusto, located at 1128 Second Street, (translation: the good taste!) serves up tasty, homemade dishes that are definitely easy on the budget. What began as a home business for the Barco family, transformed first into a "taco truck" stationed on the east end of town, and then into the bright, cheery restaurant located at 1228 Second Street in downtown Perry. Pupusas, thick corn flatbreads stuffed with meats, beans or cheeses, are a family specialty. The menu also offers an array of other traditional Salvadorian foods and sweet drinks, as well as a few American-style dishes for the kids.

Now that you've finished your lunchtime meal, you'll want a way to keep up your energy. The Perry leg of the Raccoon River Valley Trail is located just a block from downtown. From El Buen Gusto go two blocks south and one block west and stop in the newly-renovated Perry Welcome Depot to learn more about the community, bike trail development and the Perry Chamber of Commerce.

Then, enjoy a brisk walk in either direction along the scenic railroad trail. Once you've returned to downtown

Perry, you'll find a variety of shops and storefronts to entertain you until dinnertime.

If you have a craving for traditional Chinese cuisine, be sure and stop at Perry's Mandarin Café located at 1117 Second Street. Locally owned for more than 20 years, this restaurant in the heart of downtown Perry provides a healthy and delicious meal prepared with fresh, top quality ingredients and delivered to your table with the exceptional, small-town service you come to expect when dining in Perry.

## Railroad Reminiscing

Start your trip to Perry as many have done before you: explore Perry's newly-renovated Welcome Depot. Completed as part of Perry's "Great Places" project, the Welcome Depot offers a glimpse into Perry's important railroading history, which ended when Union Pacific abandoned its lines in 2004. The Depot also has tourist information available. Public restrooms and drinking fountains are available seasonally.

Across Willis Avenue from the Welcome Depot is Caboose Park, anchored by a renovated Milwaukee Railroad caboose. This caboose is now home to one of Perry's newest businesses: El Tren Taqueria! El Tren serves tacos, tortas, quesadillas, snow cones and much more. El Tren is open seasonally and the park offers shaded picnic tables where customers can enjoy their warm-weather treats.


Perry is one of several communities in the area where you can hop on a bike and access parts of the historic Raccoon River Valley Trail. Perry is part of a scenic 33-mile "North Loop," which connects Perry to Waukee and points north. The trail uses an abandoned railway that was originally built in the 1870s and 1880s.

The entire loop was finished by the summer of 2013, making the Raccoon River Valley Trail the longest continuous bike trail in the country.

The first railroad company to utilize what was then a narrow-gauge track was the Des Moines Western Railroad, which later became the Wabash, St. Louis & Pacific. Passenger trains were all but discontinued in the early 1950s, after which time the tracks were used primarily for freight.

A final purchase from Union Pacific in 2007 secured the "North Loop" portion of the trail. View the RRVTA Association's website for more complete details: [www.raccoonrivervalleytrail.org](http://www.raccoonrivervalleytrail.org).

Boone, an easy 30-minute drive from Perry, is the home of the Boone and Scenic Valley Railroad and Museum. Run by the Iowa Railroad Historical Society, the museum is open year round during the week, with additional weekend hours offered during the summer



**BETSY PETERSON DESIGN**  
Imagination, Creative Spirit and Delight Fill  
our Art Gallery with Whimsical Art and  
Functional Kitchenware Pottery.

**1121 2nd Street  
Perry, IA 50220  
(515) 657-1837**  
[betsypetersondesigns@gmail.com](mailto:betsypetersondesigns@gmail.com)  
[www.Betsypetersondesigns.com](http://www.Betsypetersondesigns.com)  
like us on Facebook and share!

season. Visitors may schedule rides on a number of authentic trains and trolleys and may dine, eat dessert or bring along a picnic lunch. Concessions are available. Reservations are strongly recommended. Call 1-800-626-0319 for details or visit [www.scenic-valleyrr.com](http://www.scenic-valleyrr.com) for schedules, pricing and availability.

Wrap up your visit to Historic Perry with a sumptuous meal at David's Milwaukee Diner in the Hotel Pattee. The Diner, named for David Jackson Pattee, the hotel's namesake and the historic Milwaukee Railroad, is decorated in the Arts and Crafts style and features art and architecture reminiscent of Iowa's railroad history. The Arrow Room recreates a 20th century dining car, and the Challenger and Hiawatha Rooms, named for Milwaukee trains, feature murals and other details by a number of local artists. From burgers and beer to salads and steaks, hungry railroad enthusiasts are sure to find something to their liking.

**Family Farms and Rural Charm**

Looking to learn more about where your food comes from? Curious about what modern farm life entails?

The Perry area has numerous locations where day-trippers can sample farm fresh products, enjoy verdant gardens and relax after a hard day's work exploring the countryside.

Consider your morning coffee. If you take yours with cream, make a point to visit the Picket Fence Creamery near Woodward to learn more about how your cream is made. You'll never use powdered again! Picket Fence Creamery is a family-owned and -operated dairy farm, creamery and country store located just off Highway 141 at exit 138. Pet the calves, chase the kittens, and sample the homemade ice cream, butter, cheese and milk. Browse the shop and select from foodstuffs made and grown right here in Iowa, including meats, produce, wines, and much more. Full farm tours are also available by appointment. Picket Fence Creamery, 14583 S. Avenue, Woodward, IA 50276. 515-438-COWS; [www.picketfencecreamery.net](http://www.picketfencecreamery.net)

On your way back to Perry, plan to stop at Prairieland Herbs. Here, for more than a decade, garden herbs have been transformed in to luxurious, all-natural body products including balms, lotions and soaps. The attached shop stocks homemade products, as well as gifts made by other Iowa artisans. Classes are available, so call ahead for schedules and availability. Prairieland Herbs, 13505 S. Avenue, Woodward, IA 50276. 515-438-4268; [www.prairielandherbs.com](http://www.prairielandherbs.com)

**So Many Things To Do and See In**

**and Around Perry**

With so many things to do and explore, visitors can fill a day, weekend or weeks with a wide variety of experiences and places. Following are some suggestions sure to enhance your time in the Perry area.

(All addresses are located in Perry unless otherwise noted.)

Take in numerous high school activities or events, including events at the state-of-the-art Perry Performing Arts Center located at 1200 18th Street. See a full listing at the school's website, [www.perry.k12.ia.us](http://www.perry.k12.ia.us).

Take a tour of the Fire Station and Police Department located at 908 Willis Avenue. Contact Perry Public Safety at 515-465-4636.

Relive small town history at one the most recognized libraries in the state. The Carnegie Library Museum houses the original 1,000 books the library opened with, along with art and exhibits depicting the growth of middle America from the mid 1800's to the present. Located at 1123 Willis Avenue; 515-465-7713 or 515-465-2481.

Relax with the life-size statue of local legend, George Soumas, in Soumas Court, located next to the Hotel Pattee, 1112 Willis Avenue; 515-465-3511.

Take in the Wall of Witnesses, located on the southwest wall of Soumas Court. The Wall depicts the faces of

**SPEND THE NIGHT IN A DALLAS COUNTY PARK**

- **Sportsman Park Cabins & Camping** •  
(electrical and primitive camping)
- **Kuehn Conservation Area** •  
(primitive camping)
- **Glissman Conservation Area Lodge** •
- **Dayton Stagecoach Inn** •

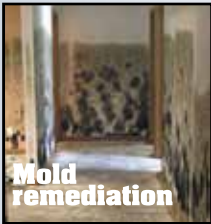


AR000101000001

**Dallas County Conservation Board**  
**515.465.3577**  
[www.dallascountyiowa.gov](http://www.dallascountyiowa.gov)



**Wind and storm damage repair**



**Mold remediation**



**Water and fire restoration**



**Water Mitigation & Repair**



**Biohazard cleanup  
General cleaning services**



**Reconstruction**



**Odor removal  
Carpet and upholstery cleaning**



**866-599-CLEAN**

**515-465-4325**

**2901 Willis Avenue ~ Perry**

well-known Perry area men and women that have helped shaped Perry's history. The ceramic plaques were created by David Dahlquist, Rebecca Ekstrand and Rick Stewart.

Get your freshly popped popcorn on Thursday nights (May-Oct) at the historical Popcorn Stand on the corner of Willis Avenue and Railroad Street in front of the Perry Public Library.

Stop by the Big Bike located on the corner of Willis and 1st Streets for a photo with this 15 foot tall metal creation.

Visit Mary Rose Art & Antique Gallery, located at 1215 Warford Street. The distinct craftsmanship of local artists is on display as well as Polish pottery, stained glass, antiques & various treasures of the past and present. Mary Rose now carries a delicious array of specialty candy and chocolates. Sign up for a stained glass course at 515-465-4222; [www.maryrosecollection.com](http://www.maryrosecollection.com).

Take a break and enjoy an adult beverage and a game of pool at The Crooked Rail. The pub has changed owners several times over the generations, but is a Perry landmark and is located at 1010 Second Street in downtown Perry near the Carnegie Library and VanKirk DMACC Career Academy.

Stay or visit the historic Hotel Pattee located at 1112 Willis Avenue. This spectacular hotel invites guests to relax in a setting celebrating the sights and sounds, the people and memories, of small town America with 40 different themed rooms. Call 888-424-4268 or 515-465-3511; [www.hotelpattee.com](http://www.hotelpattee.com).

While visiting the Hotel Pattee, bowl a frame or two in the two lane alley located in the lower level.

Have an authentic El Salvadorian Pupusa at Restaurante El Buen Gusto, located on the corner of Lucinda St. and Second St. 515-465-5183.

Treat your four legged friend to a day at the Perry Dog Park, by the baseball and softball diamonds south of Pattee Park and just off of Hwy 141. For more information call the McCreary Community Building at 515-465-5621. Afterward, take your dog into the Pet Wash, a one of a kind experience for you and your pooch located on First Street between Warford & Lucinda; 515-480-5261; [www.cleanworksautowash.com](http://www.cleanworksautowash.com).

Buy some local produce at the Farmer's Market during summer and fall on Thursday's from 4-7:00 p.m. located in Josh Davis Memorial Plaza on Second Street between Willis and Warford. For more information call the Perry Chamber of Commerce at 515-465-4601.

Take in a sand volleyball game with friends at Wiese Park located at 1800 Pattee Street. Visit one of the finest small museums in the state! Forest Park Museum exhib-



its natural, cultural and historical events and artifacts of central Iowa. Located at 14581 K Ave. 515-465-3577; [www.co.dallas.ia.us](http://www.co.dallas.ia.us).

Take a break for ice cream at Mandarin Cafe! 1117 Second Street; 515-465-2080.

Play a round of Disc Golf at Wiese Park, bring your own discs or rent them at the McCreary Recreation Center on Ninth & Pattee St. 515-465-5621.

Bundle up and head to Seven Oaks Recreation outside of Boone for winter fun, skiing and snow tubing. Groomed snow all season long! Located at 1086 222nd Drive, Boone, 515-432-9457; [www.sevenoaksrec.com](http://www.sevenoaksrec.com).

Walk and rollerblade the trails around Wiese Park or bring your soccer ball for a pick-up game, 515-465-5621.

Visit the Iowa Arboretum's 378-acre facility located in scenic, rural Boone County, 24 miles northeast of Perry. This living museum with a great shop and classes opens your senses to the beauty of nature. 515-795-3216; [www.iowaarboretum.org](http://www.iowaarboretum.org).

Drive or ride your bike on the Raccoon River Valley Trail a short distance west to Sportsman's Park in Dawson to see forty acres of oak & hickory timber overlooking the Raccoon River; where a playground, shelter house, modern restrooms and camping are available. West of Perry on 130th St. 515-428-8356 or 515-465-3577; [www.co.dallas.ia.us](http://www.co.dallas.ia.us).

While in Dawson, visit the Dawson Depot, a piece of Railroad history. The Depot is used as a trailhead, a concession area, or a welcoming oasis for weary bicyclists/walkers/joggers.

Browse through Bacon Jewelers located at 1213 Second Street to view some of the finest jewelry, china, crystal, keepsakes and gifts. 515-465-2991; [www.galynx.com/baconjewelers](http://www.galynx.com/baconjewelers).

Perry Grand Theatre at 1312 2nd Street, will provide a perfect get away with its first-run movies in 3 digitally equipped auditoriums.

Explore why Perry is becoming known as the "Bicycling Hub of Iowa". With our in-town trail system, named the Hiawatha Trail to commemorate Perry's railroad history, and central location on the 33 mile north loop of the Raccoon River Valley Trail, Perry is truly at the center of all things biking in Iowa. In addition to Perry's ease of access, and central location on, the 89-mile-long paved trail, Perry celebrates biking and bikers throughout the year. Perry is host to the famous BRR ride the first Saturday of every February.

Get out your clubs and golf at the Perry Golf and Country Club, then gather your friends for dinner and a drink at the Clubhouse. Located off Hwy 144 north of

Perry. 515-465-3852.

Grab a brat, hot dog, smoothie or snow cone and enjoy the sunshine at El Tren in Caboose Park, corner of First and Willis Avenues, which is also the trailhead for the Raccoon River Valley Trail.

Visit Picket Fence Creamery, an 80 acre family owned and operated dairy farm, creamery and country store located just off Highway 141 at the Woodward exit. Get your ice cream in 5 different sizes and over 20 flavors! [www.picketfencecreamery.net](http://www.picketfencecreamery.net).

Visit Lake Robbins Ballroom located at 26726-150th Street between Perry and Woodward to dance the night away. Check the schedule at [www.lakerobbinsballroom.com](http://www.lakerobbinsballroom.com).

Practice your swing from dawn to dusk at the Perry Driving Range. 18th & McKinley; 515-465-3503.

Drive 20 miles west of Perry to Jefferson to visit the Mahanay Bell Tower, a fourteen-story carillon built of glass and ceramic cement. Visitors can view the city and its surrounding countryside all in Jefferson, Iowa. 515-386-2155; [www.gojacc.com](http://www.gojacc.com).

Visit Whiterock Conservancy near Coon Rapids. Whiterock Conservancy is an Iowa non-profit land trust dedicated to conserving and protecting Iowa's natural resources, demonstrating sustainable rural land manage-

**Certified Bicycle Mechanic On Staff!**

**Authorized dealer of**

TREK  
STEEL MOUNTAIN  
PERFORMANCE

Call  
Lee Coons, Owner  
**515-577-3379**  
Jodi Coons, Owner  
**515-577-3874**

M-F 10-7  
Sat. 9-5  
Sun. 12-4

**Repair  
Rentals  
Bike Sales  
Accessories**

[www.bikeperry.com](http://www.bikeperry.com)

**RACCOON RIVER VALLEY BICYCLE**

**1118 Willis Ave.  
Perry, Iowa**

f t

ment, and engaging the public with the environmental outdoor recreation and education. [www.whiterockconservancy.org](http://www.whiterockconservancy.org).

Listen to the old time piano and visit the gift shop at the Dallas County Hospital 610 10th St. [www.dallascohospital.org](http://www.dallascohospital.org).

Stop in at BRG Music of Perry, 1209 Second Street, to see some of the coolest guitars and maybe take a lesson or two with your instrument of choice. 515-465-7710; [www.brgmore.com](http://www.brgmore.com).

View Albert Paley's Reconfiguration Arches that reflect the local history that Perry-area residents and agriculture shaped in the Midwest, located on each end of Soumas Court. See how many farm equipment pieces and home appliances you can pick out of the sculptures.

Visit the Perry High School Heritage Exhibit which puts the public and students in touch with our school history. The exhibit is located in the High School at 1200 Eighteenth Street; 515-465-3503.

Visit Penoch Winery in Adel where you can walk through the grape vines and sample 12 varieties of wine. Located at 26759 N Ave. Adel, (north of Adel, west side Hwy 169, or N Avenue.) [www.penoach.com](http://www.penoach.com).

Visit the Voas Nature Area and Museum with approximately 372 acres of land comprised of oak and hickory

forest, re-established prairie and restored wetland as well as an extensive rock and mineral museum, located northwest of Minburn on Lexington Road. 515-465-3577; [www.co.dallas.ia.us](http://www.co.dallas.ia.us).

Stop into the Ben's Five and Dime at 1221 Second Street in downtown Perry for anything from school supplies to candy, frames to house wares, they have it all! If you can't find it anywhere else ... Ben's Five and Dime probably has it. 515-465-4825.

Check out a book, magazine or movie at the Perry Public Library, 1101 Willis Avenue, where the children's area has lots of fun activities and many nooks to curl up in and relax while reading your favorite book. The library also had free Internet service available to patrons. 515-465-3569; [www.perry.lib.ia.us](http://www.perry.lib.ia.us).

Have Sunday breakfast at the Hotel Pattee, your choice of an entrée as well as pastries, fruits and deserts. 515-465-3511, [www.hotelpattee.com](http://www.hotelpattee.com).

Walk, run, ride or blade on the Raccoon River Valley Trail. The trail has been declared one of the longest paved trails in the United States, and one with the longest interior loop in the nation at 72 miles. This beautiful trail winds through the Raccoon River Greenbelt Area following an old railroad line. [www.co.dallas.ia.us](http://www.co.dallas.ia.us), [www.raccoonriver-valleytrail.org](http://www.raccoonriver-valleytrail.org).

Head out to the Figure 8 races, at the Dallas County Fairgrounds outside of Adel or take in the summer tradition of the Dallas County Fair, rides, races, livestock, food, bands and more. [www.dallascountyfair.com](http://www.dallascountyfair.com).

Sit down and chat with friends or neighbors, while having breakfast or coffee at Hy-Vee Deli. 1215 141st St.; 515-465-3543.

Enjoy the wetlands, a re-established prairie and a native timber area at Hanging Rock where you can hunt and fish, bike or have a picnic. 515-465-3577; [www.co.dallas.ia.us](http://www.co.dallas.ia.us).

Join thousands of cyclists the first Saturday in February, on a 24-mile round-trip bike ride on the annual Bike Ride to Rippey (BRR) that is tagged "The Original Winter Ride" and "Winter Ragbrai Reunion". This ride is not called BRR for anything - the ride goes on - in all weather! [www.perryareachamberofcommerce.com](http://www.perryareachamberofcommerce.com).

Bring your GPS and go Geocaching in and around Perry. [www.geocaching.com](http://www.geocaching.com).

Have some authentic Latin American pastries and bread at Panaderia Mexican Bakery located at 1114 Second Street in downtown Perry. 515-465-2994.

Savor Iowa's best pork tenderloin at To-Jo's Bar and Grill just 12 miles west of Perry in downtown Jamaica. 641-429-3007

**MC**  
*Mandarin Cafe*  
**ASIAN FOOD**  
Since 1989

**Now Serving Soft Serve Ice Cream**

Monday-Saturday  
Lunch 11-2 Dinner 4:30-9  
Sundays  
Lunch 11-2 Dinner 4:30-8

**1117 2nd St.  
Perry**

**We Deliver...515-465-2080**

Take the family to cool off at the Splash Pad at the McCreary Community Building 1800 Pattee Street. While you're there, check out the heated indoor pool, use the whirlpool, dry-air sauna, volleyball courts, walking/running area, and six basketball hoops. There are also lots of adult and kids activities to participate in. 515-465-5621.

Enjoy mouth-watering Chinese food and a great atmosphere at the Mandarin Café, located at 1117 Second Street. 515-465-2080.

Kick off the holiday season, the Friday after Thanksgiving, with Perry's Lighted Christmas Parade. See floats with dazzling lights during the parade and gather for the Community Christmas Tree Lighting near the Perry Public Library following the parade. And, don't forget hot chocolate and cookies with Santa at LaPoste! 515-465-4601; www.perryia.org

Lace up your tennis shoes and take in a game at the tennis courts at Pattee Park. West 3rd Street & Harold Bailey Way.

Enjoy the Fourth of July activities in Perry. The day kicks off with a parade down Willis Avenue. Follow the parade to Pattee Park where the entire family will enjoy kid and adult water fights, concessions, arts and craft vendors and entertainment at the bandstand with fireworks at dusk.

Appreciate music, arts and ice cream during Perry Fine Arts Ice Cream Social and Musical Extravaganza at 2:00 p.m. on the Fourth of July at the First United Methodist Church located at the corner of Willis Avenue and Third Street. 515-465-4782.

Join the annual guided Cemetery Walk in Perry's Violet Hill Cemetery to visit the graves of several of Perry's well-known residents with re-enactments of our favorite local characters, while also studying examples of gravestones and burial symbols. 515-465-2481 or www.perryia.org.

Listen to Iowa timeless classics from KDLS and find out what is going on in the Perry area. 1310 AM www.raccoonvalleyradio.com; 515-465-5357.

Have a margarita at Casa de Oro, 1211 Second Street, while enjoying delicious Mexican food in the beautifully restored building. 515-465-8808.

Check out quality home interior furnishings, painted or upholstered furniture and accessories at Alice's Haus Dresin, Ltd. Located at 924 Otley Avenue and housed in a relocated former church, the unique building is another reason to visit this beautiful store. 515-465-4750.

Visit Perry Paint & Glass with your remodeling project needs! 515-465-4472.

Take a ride on the Boone Scenic Valley Railroad over

the Kate Shelley Bridge - the longest and highest double-track bridge in the world. www.scenic-valleyrr.com.

Gather family and friends to play a round of horseshoes in Pattee Park or Wiese Park just east of playground equipment.

Visit Spring Valley Honey Farms. With over 25 years of experience, they currently produce and market over 100,000 pounds of honey annually along with bath and beauty products. 14405 Hull Ave. 515-465-5939; www.springvalleyhoneyfarms.com.

Love Railroad history? Check out the historic Caboose and renovated railroad depot which is now a Welcome Depot at the corner of First and Willis Avenue, as well as David's Milwaukee Diner and Inter-Urban Lounge in the Hotel Pattee. You can also check out the railroad memorabilia in the Security Bank Building's Clarion Room which is located at 1101 Willis.

Get a massage at the Hotel Pattee, 1112 Willis Avenue, then take a walk down the street to Vivi Nails, 1218 Willis Avenue, and treat yourself to a pedicure and manicure.

Picnic and play in Wiese Park or Pattee Park with safe playground areas for all.

Grab your fishing pole and find a shady spot to spend the afternoon fishing along the beautiful Raccoon River.

Watch the sunset and view the best nature has to offer

*Fabulous Finds  
For You  
and Your  
Home!*

**THE SCOTTISH FOX**

1118 2nd Street • Perry, Iowa (515) 971-3350

at the recently re-paved Trestle Bridge, just west of town on the Raccoon River Valley Trail. [www.raccoonrivervalleytrail.org](http://www.raccoonrivervalleytrail.org).

Pay tribute to our veterans at the local Veteran's Memorial, located at 8th & Bateman, near the McCreary Community Center.

Keep the holiday tradition alive by cutting down your own Christmas tree at Hill's Tree Farm located at 19885 Midland Trail in Minburn. 515-677-2389.

Get your fill of fresh picked Iowa Sweet corn dripping with butter and family entertainment at the Adel Sweet Corn Festival held annually the first Saturday in August on the historic Courthouse Square. 515-993-5472; [www.adeliowa.org](http://www.adeliowa.org).

Pick your own pumpkins and apples during the fall season with your kids and family. Then enjoy some homemade apple cider! All this at Deal's Orchard, located at 1102 244th St. near Jefferson. [www.dealsorchard.com](http://www.dealsorchard.com).

Get your skateboard or roller blades out to enjoy the skateboard park at Pattee Park. Don't forget your helmet, knee and elbow pads! West Third St. & Willis Ave.

Visit the Hindu Temple and Culture Center. Located 4 miles south of Madrid and .6 miles north of the Des Moines River bridge on the west side of Highway 17. [www.iowatemple.org](http://www.iowatemple.org).

Find bargains galore at the Highway 141 Garage Sales the first Friday and Saturday in August. From Grimes to Sloan and all points in between along Hwy 141. [www.141sale.com](http://www.141sale.com).

Experience the mystique and fun of an Iowa vineyard and winery at Snus Hill Winery in the Madrid area. Located approximately 7 miles northeast of Madrid at 2183 320th Street. 515-795-3535; [www.snushillwine.com](http://www.snushillwine.com).

Pack a lunch and put on your hiking boots while visiting the sandstone cliffs and dense woodlands that make Ledges State Park one of Iowa's signature parks. [www.outdoorsiowa.com](http://www.outdoorsiowa.com).

Bring your favorite little ghost, goblin or ghoul to Perry's Spooktacular! Each Beggars Night, the streets of downtown Perry are blocked off while trick-or-treaters enjoy an evening of safe activities and candy gathering. [www.perryareachamberofcommerce.com](http://www.perryareachamberofcommerce.com).

Tour the local countryside while looking at large, colorful 8-foot square wooden blocks, mounted on barns or cribs that are at least 50 years old. [www.barnquilts.com](http://www.barnquilts.com).

Stop at Perry Perk Coffee Shop located at 1218 Second Street. It's a great place to start your day or catch up with a friend. You'll find fresh baked goods and the best cup of coffee in town.

Mark your calendar for the second weekend of November and Art on the Prairie. Art on the Prairie is an annual art festival held in the Perry downtown district in eight different buildings - Hotel Pattee, Town Craft, Security Bank Building, Carnegie Library, La Poste and Peterson Design, Citizens Bank Gallery and the Perry Public Library. This incredible festival hosts over 100 Iowa artists, musicians and poets and provides a weekend of art for the eyes and ears.

Join chocolate lovers galore during the Perry area merchants' Chocolate Walk each February. Have your ticket checked in exchange for a chocolate treat while visiting numerous area merchants.

In June, bring the family to Pattee Park for Friday Fest. Bring your lawn chair and cooler to enjoy an evening of music, food and socializing in the park. 🍷🎸

**Call Anytime - Everytime**



**Greg Haglund, Jason McKee**



**13152 Kimble Place  
Perry, Ia**

**515-428-8410**



# Cultural Attractions

## The Welcome Depot

Perry welcomes thousands of tourists each year. To make your visit to Perry even more rewarding, stop by the Welcome Depot located on the Raccoon River Valley Trail at the corner of First Street (Iowa Highway 144) and Willis Avenue.

Inside the Welcome Depot, you will find information on attractions, annual events, recreation, dining, lodging, shopping, services, day trips and the Perry community. Check the electronic message board located on the property corner for current community activities.

The Welcome Depot is open from 9 a.m. to 9 p.m. during the summer and from 9 a.m. to 5 p.m. otherwise. Information is always available at [www.perryia.org](http://www.perryia.org) to assist with your trip planning.

On the grounds of the Welcome Depot is the Big Bike. In an effort to help raise funds and bring awareness to the 9 mile connector trail between Perry and Woodward, the Big Bike was the creation of Perry resident, Cheri Scheib.

The Big Bike sits next to the Welcome Depot and is lit up at night.

## Perry Cultural District

The diverse culture of Perry's past and present is showcased in The Perry Cultural District, located in and around the historic downtown, including Pattee Park. The district is home to a wide variety of historic structures housing businesses and non-profit organizations with diverse cultural offerings for visitors and residents alike. The district enhances the quality of life, contributes to creativity and innovation and represents shared values, goals, attitudes and practices that are Perry.

The Perry Cultural District was established in 2006 to encourage collaboration with the city, economic development and Chamber of Commerce, as well as to partner with local organizations, businesses, and individuals to enhance the quality of life. The district was also established to enrich Perry's economy through developing and sustaining cultural facilities, such as the Des Moines Area Community College Career Academy in Perry, in a synergetic fashion.

## Hotel Pattee

When visiting Perry, you have the rare opportunity to encounter a unique reminder of the culture and experi-

ences of those who came from all over the world to build our town, our state and our country. The Hotel Pattee's architecture, artwork, artifacts, and overall attention to detail are, in and of themselves, worthy of a trip to Perry.

Originally opened in May of 1913, the Hotel Pattee was the vision of enterprising brothers Harry and William Pattee. Perry was at that time a thriving agricultural and railroad town 35 miles north of Des Moines, Iowa. Over the years, the hotel reflected the community's economy in good times and bad.

By 1993, the hotel had fallen into a state of disrepair and was facing extinction when it was purchased by Howard and Roberta Ahmanson. Roberta Green Ahmanson, a native of Perry, had a vision of restoring the hotel to its beauty that she remembered as a small child, while bringing life back to the city.

The hotel closed in 1995 for a complete renovation and then reopened on May 29, 1997 – 84 years to the day of its original grand opening. The newly renovated hotel incorporated the culture and experiences of the local area

*Keeping Pharmacy*  
**SIMPLE**

**FREE DELIVERY IN PERRY!**  
*Prescriptions filled in less than 10 minutes!*

No long waits. Prescriptions filled while you wait!

- On-line refills • Drive thru Window
- 24 Hour Prescription Drop Box
- Immunization Services
- We Accept Medicare Billing Methods
- Durable Medical Equipment
- Nursing Home Service

**MEDICAP PHARMACY**

601 1st Ave., Perry 515-465-3391  
Emergency Phone 515-240-7281

*We'll always make time for you.* Krystal Bell PharmD

Dave Wright R.Ph.

into its 40 individually themed rooms and public spaces.

Following are seven examples of room testimonials representing Perry residents, their culture, events and how they shaped local, national and even world history. We invite you to visit Perry to see these and the thirty-three other commemorative rooms.

- Nikita Khrushchev made a controversial visit to Iowa in the 1950s. His motorcade rolled through Perry on his way to Roswell Garst's farm in Carroll County. Today, Iowa is a sister state to Stavropol.

- Bill Bell, one of the world's most famous tuba players was from and buried in Perry. Every year since his death, accomplished tuba players come to play at his graveside, saluting his music. We join them in their tribute.

- Years ago, the Perry Daily Chief hired a local kid, Snick Hamlin, who liked to draw. He created a cartoon strip "Alley Oop," that captured the heart of our nation.

- Working with wood goes back into the midst of history. Here in Iowa, we have a long tradition of hand-made furniture, often formed from trees in the back yard or the back woods. Designed by acclaimed woodworker Chris Martin, this room is furnished with work by eight Iowa furniture maker-designers and printmaker Carl Homstad. On display is the work of many Iowa carvers, all gathered together to remember this most useful art.

- For 37 years, Betty Mae Harris taught dance in the big room at the back of the second floor of the Hotel Pattee. This room brings back that studio and the grace of the dance.

- For nearly a century, young Iowans learned to read and write in one-room schools like Alton School on the outskirts of Perry. This room celebrates all who learn and all who teach.

- For decades, the Perry High Telital anchored the back page of the Saturday Perry Chief and, for much of that time, was presided over by Leonard Rossman, who trained generations of reporters. See the room that honors local newspapers and those who keep their standards high.

We welcome you to our small piece of Americana nestled into Perry, Iowa.

The Hotel Pattee is located at 1112 Willis Avenue. For additional information call (888) 424-4268 or visit [www.hotelpattee.com](http://www.hotelpattee.com).

### Carnegie Library Museum

Meticulously renovated to reflect its original 1910 appearance, the Carnegie Library Museum houses various collections of materials, including the library's original 1,000 books. The museum tells the story of small

*Because she's my mom...* I choose Perry Lutheran Home main campus



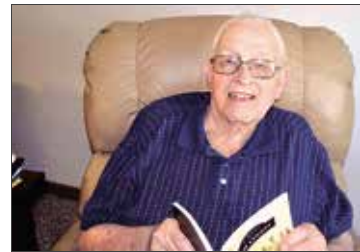
*"I am so pleased with my mom's new life at the Perry Lutheran Home. She went from living in a place that offered very little stimulation to being involved in life again. She has just blossomed here! Thank you!"*

Kathy - daughter of beloved PLH resident, Helen

*Because he's my dad...* I choose Perry Lutheran Home Spring Valley campus

*"After visiting, we knew this was the Christian, clean, loving place we were looking for. After having Dad here for a year, we know we made the right decision. My Dad is 'happy as a lark' living at Spring Valley!"*

Pete - son of beloved Spring Valley tenant, Pete



**Perry Lutheran Home is Your Christian, Caring Community!**

Home Care • Assisted Living • Skilled Nursing • Respite • Hospice • Award-Winning Memory Care  
Main Campus: 515.465.5342 | [perrylutheranhome.org](http://perrylutheranhome.org) | Spring Valley: 515.465.7500

Midwestern towns and the importance of libraries to the people.

The City of Perry and the Dallas County Conservation Board have a partnership to house displays and artifacts from Forest Park Museum at the Carnegie Library Museum on a rotating basis. This collaboration will offer visitors and local citizens the opportunity to see the many items that have been in storage at Forest Park Museum.

The Carnegie Library Museum is open to the public if the “Open” flag is flying. Tours can be arranged outside of operation hours. To inquire about the Carnegie Library Museum, contact City Hall at 515-465-2481.

### Reconfiguration Arches

What does Perry have in common with the Metropolitan Museum of Art in New York, the Victoria and Albert Museum in London, and the Smithsonian’s National Museum of Art? A set of grand metal sculptures created by Albert Paley, a metal sculptor known around the globe for his inventive approach to form development and metal techniques.

Visitors entering Soumas Court pass through Paley’s interpretation of Perry’s history when they walk through a pair of ceremonial arches, located on each end of the Court.

Made of farm equipment, mining tools, railroad items, and used pieces of metal donated by local residents, the large, silver-colored arches recall the stories of the men and women whose labors built Perry and helped the area thrive.

Looking closely at the Reconfiguration Arches, you will see pieces of Perry’s past. You will notice the wagon wheels, water pumps, tractor parts, augers, tillage disks, a piano sounding board, railroad and mine rails, and more. Welded together into four 16,000-pound sculptures, the arches reflect the local history that Perry-area residents and businesses shaped.

Local metalworkers helped Albert Paley fabricate the ceremonial arches to celebrate Perry’s metal manufacturing, mining, agricultural, and railroad heritage. The workers came from Perry’s long-established metal-fabricating companies.

“The objects in the Arches reflect the people who lived here and determined what this community was. As pieces of rusted metal, the objects were worthless, but the connectedness and associations they bear witness to are extremely important,” Paley said.

### Poem for Reconfiguration

After experiencing the Reconfiguration Arches, read

the “Poem for Reconfiguration” and then look at the arches again. Your experience will be different.

The poem was written by Ted Kooser, one of the most highly regarded poets in the nation. Kooser served as the United States Poet Laureate Consultant in Poetry to the Library of Congress from 2004 – 2006, during which he won the Pulitzer Prize for his book of poems, *Delights & Shadows*.

“Poem for Reconfiguration” is cast in bronze and located to the right, on the Town/Craft Center building, before you enter the Reconfiguration Arches from the Willis Avenue entrance of Soumas Court.

### Soumas Court

One of the finest courtyards in the world, Soumas Court is cradled between the Hotel Pattee and the Town/Craft Center. Soumas Court celebrates the people who make Perry a community.

The court is named after George Soumas, son of Greek immigrants, World War II hero, leading citizen, and former mayor. A life-sized bronze sculpture of Mr. Soumas, created by Iowa artist Chris Bennett, serves as a focal point for this serene city-center getaway. The statue depicts George sitting at a table drinking coffee. The statue is approachable. Go ahead, sit at the table and share a

- Flooring • Paint • Home Accents
- Furniture • Countertops
- Window Treatments



*Where decorating is more than a look... It's A Feeling!*

### Alice's Haus Dresin, Ltd.

924 Otley Perry, IA 515-465-4750  
Hours: Monday - Friday 9-6 ~ Saturday 9-2



drink with George – he’s a great listener and takes a great photograph.

The courtyard floor, designed by artist David Dahlquist, is paved in beautiful brick with inset tiles of Boston Ivy interspersed with oak leaves. The courtyard plants and trees are mostly Iowa natives, selected and placed by Better Homes and Gardens Editor Elvin McDonald.

Reconfiguration arches, the “Wall of Witnesses,” hand crafted tiles, a poem by Poet Laureate Ted Kooser, sun filtering through the landscaping, a cool breeze, beverages - Soumas Court is relaxing, inspiring, and open daily to the public.

## Wall of Witnesses

Des Moines artist David Dahlquist designed ceramic plaques depicting the faces of several well-known men and women from Perry and the surrounding area. The wall is a unique tribute called, “Wall of Witnesses.”

The clay tiles honor those who have gone before, who stand as witnesses to the past, and well-wishers to Perry’s present and future. It also serves as an inspiration to those who set the community’s course both today and tomorrow - whether in Perry or in your community.

There is a Chinese proverb that states, “When

you drink from the well, remember the well-digger.” Remembering the well-digger means remembering that we all stand on someone else’s shoulders and that we can overcome the challenges and to remember the good.

The “Wall of Witnesses” is dedicated to Perry’s most beloved well-diggers.

The current plaques consist of Flora Bailey, Perry’s first librarian; Cornelia Bulkley, daughter of an early merchant family and teacher; Earl Green, railroad engineer; V.F. “Snick” Hamlin, creator of “Alley Oop;” Betty Mae Harris, dance teacher; Horace Lewis, minister and hospital chaplain; Hazel Purviance, lifelong farmer; John Turner, teacher; Roy Whyte, musician who traveled the country with big bands; Ned Willis, lawyer who worked for the Betterment of the community; Michael Kanealy, a long time supporter and promoter of Perry; Charles Joy, local attorney, Dallas County Attorney and Perry ambassador; Jim Walstrom, Co-founder of the annual BRR ride and tireless promoter of the City of Perry.

While reflecting upon Perry’s “Wall of Witnesses,” remember the well-diggers close to you.

## Caboose Park

A caboose once completed almost every freight train in this nation. Those in the caboose were as important as those in the engine. As trains cleared switches, those in the caboose insured the switches were set for the next passing train. The caboose served as the shelter for workers who monitored the status of the train’s rear. Was the load shifting? Did sparks from the train set ditches on fire? Was the rear of the train still attached to the front?


In the 1980s, Federal laws were changed to require full crews in each caboose. Because of the labor expense, railroads eventually replaced the duties of those in the caboose with automated technology. Today, the caboose and those who manned her have been replaced by silicon wafers whose duties are signaled by a sole blinking red light.

The demise of the Milwaukee Railroad in Perry coincided with the railroad’s retirement of the caboose.

To preserve the strong history of railroading in Perry for future generations, the Perry Caboose Committee was established to purchase a Milwaukee Road caboose with donations and memorials from citizens of the Perry area.

In 1992, the City of Perry accepted ownership of the Milwaukee Road Caboose and took responsibility for landscaping and maintenance of the area.

While landscaping, trails, and signage have been added around the Caboose, 2010 proved to be the Caboose’s



**F**rom  
*Generation to Generation...*

## Hastings

*Funeral Home*

*There are promises that live on from generation to generation. Since 1976 families have fulfilled commitments to friends and loved ones by calling on Hastings Funeral Home.*

*They are greeted with kindness, compassion and extraordinary service.*

Perry 515-465-4691 • Jefferson 515-386-8181  
hastingsfh@questoffice.net hastingsfuneral@netinsnet  
AL0001010476-01 www.hastingsfh.com



year. With generous donations from local businesses, the Caboose was renovated.

Grant Eklund, a young entrepreneur, petitioned the City Council to allow him to use the Caboose as a food stand on a trial basis, and is now home to the seasonal taqueria, El Tren.

### Big Bike

In an effort to help raise funds and bring awareness to the 9 mile connector trail between Perry and Woodward, the Big Bike was created by Perry resident, Cheri Scheib in cooperation with Wiese Industries and several other community members.

The 15 foot tall, 30 foot long bicycle sits next to the Welcome Depot at the intersection of 1st Street and Willis Avenue in downtown Perry.

### Security Bank Building

Visit the completely restored building and view a collection of Midwestern art, railroad memorabilia and photographs. The first floor has office space available that is reminiscent of a small town bank in the early 1900s. The Clarion Room, also located on the first floor, hosts many community activities as well as semi-monthly City Council meetings. The second and third floors are home to the School Administration Offices and City Hall, respectively.

Stop by the Security Bank Building at 1102 Willis Avenue, take in the beauty, view testimonials of days gone by and inquire as to what's happening in Perry, Monday through Friday, 9 a.m. to 4:30 p.m. For further information, call 515-465-4601 or visit [www.perryia.org](http://www.perryia.org).

### Town/Craft

Located in two beautifully renovated historic buildings next to Soumas Court, the center for Town/Craft is a research and creative idea center that explores and advances new alternative futures for small towns, cities and urban neighborhoods. Town/Craft engages in exploration, discovery, study and the dissemination of designs and methods to advance and sustain small communities.

Town/Craft pursues its mission through a series of conferences, projects, publications, consultations, and exhibits that focus on the various challenges and opportunities that face the historic culture of small communities such as Perry.

The Town/Craft currently houses the Perry Area Chamber of Commerce and a host of other co-working spaces for start up businesses.

Walk by the Town/Craft at 1124 Willis Avenue, ad-

mire a beautiful restored set of buildings and check if an exhibit is open for public viewing. For more information, call 515-465-2481.

### Des Moines Area Community College at Perry

See something that possibly no other small towns can show you - a career academy in a historic downtown district. The facility was made possible through private and corporate donations spearheaded by Perry Economic Development Corporation, an I-JOBS grant awarded by the State of Iowa and donations in-kind from the City of Perry and area school districts. There is no doubt that the campus enhances the quality of life for those who attend as well as local residents and visitors.

The Des Moines Area Community College at Perry is located to the south of the Carnegie Library Museum and Perry Public Library.

### Perry High School Heritage Exhibit

The heritage exhibit puts the public as well as Perry High School students in touch with school history. The site features exhibits that include historic school photographs and quotations from students, teachers,



## LA POSTE

La Poste, which is and always will be a social gathering space. A space to celebrate art, music, food and community.






*Multiple venues available.*

**WEDDINGS • CONFERENCES  
MEETINGS • CONCERTS  
PARTIES**

515-360-2010    515-490-1584

**WWW.LAPOSTEPERRY.COM**

1219 Warford St. in Perry • [TheLadiesPostOffice@gmail.com](mailto:TheLadiesPostOffice@gmail.com)

administrators, and parents that mark critical moments and document everyday life throughout school history.

The exhibit, located in the Perry High School commons area, is open to the general public after 3:30 p.m., Monday through Friday. Call 515-465-4601 for information.

### **Perry Public Library**

Stop in and ask for directions to local attractions, access the wireless internet, log into one of the many PCs to check your e-mail or browse the local newspaper. The Perry Public Library is a great rendezvous point with 12,000 square feet of space, more than 46,000 books, magazines and movies, and the city's only free public computing lab.

The Perry Public Library has something for everyone. The Perry Public Library is located at 1101 Willis Avenue. Further information is available by calling 515-465-3569 or by visiting [www.perry.lib.ia.us](http://www.perry.lib.ia.us).

### **Forest Park Museum and Arboretum**

While in Perry, you have the opportunity to visit one of the finest small museums in the state, exhibiting natural, cultural and historical events and artifacts of central Iowa.

Since its inception in the 1940s by Eugene Hastie, a farmer, local historian and author, Forest Park Museum Complex has now grown to include Baldwin Hall and the Alton School house, which is the last one-room school house of Dallas County. The 1860 Grabenhorst log cabin is a stark reminder of the advances made in living quality and efficiencies. The museum proudly displays artifacts of early transportation, farm machinery, mining tools, small hand tools, railroading, blacksmithing and much more. Throughout the year, the museum offers various educational programs that enhance the historical and natural aspects of their offerings. Check the museum's website for program offerings.

The museum also houses the Bill Wagner Scale House exhibit in tribute to Wagner's 40-plus years of devotion to the historic preservation of old buildings for future generations. Wagner was the lead architect in the restoration and rehabilitation of Terrace Hill as well as many other notable projects. The Scale House is an 1880s building formerly used to weigh grain wagons and one of Wagner's rescued and restored buildings. Wagner converted the Scale House into his office utilizing historic building furnishings and used it for his work studio for many years. The building was moved from Dallas Center to the museum. Many of Wagner's sketches still adorn the walls.

The museum arboretum was also originally developed

in the 1940s by Hastie. The Dallas County Conservation Board has since added twelve acres to the natural exhibit and has re-established prairie grasslands and wildflowers. A mowed walking trail allows for easy access to over 100 different species of primarily native trees and shrubs.

Forest Park Museum is free to the public and open Monday through Friday from 8 a.m. to 4:30 p.m. all year long. Saturday, Sunday and Holidays visitors are welcome from May 1 to October 31, 1 p.m. to 4:30 p.m. The museum is open by appointment anytime. The Arboretum hours are from 8 a.m. to 10 p.m. daily all year long. Forest Park Museum is the headquarters and administrative office for the Dallas County Conservation Board which is open Monday through Friday, 8 a.m. to 4:30 p.m.

Forest Park Museum and Arboretum can be contacted at 515-465-3577, or visit the website at [www.co.dallas.ia.us](http://www.co.dallas.ia.us) and follow the links.

Forest Park Museum and the Dallas County Conservation Board headquarters are located at the south edge of Perry, approximately ¼ mile south of Highway 141, on the west side of K Avenue. (K Avenue north of Highway 141 is called 16th Street). Watch for brown and white arrowhead directional signs just before the junction of K Avenue and Highway 141.

### **National Registry of Historic Places**

Perry's downtown architecture has been shaped by numerous fires of the past. Like most small towns, Perry's original buildings were built within a brief window of time. The architectural style popular at the moment was copied into each new building. As fires claimed buildings, new structures were built, each different in style. Today, Perry's downtown architectural style is diverse because of the fires of the past.

To protect Perry's building diversity, the Perry Historic Preservation Commission has successfully placed over thirty buildings on the National Park Service's National Register of Historic Places. Nearly one dozen of the buildings have undergone extensive renovation. The commission also works to ensure new structures built within the historic district complement the buildings of the past. 🏡



# Parks, Trails and Recreation

## Caboose Park Trail Head and Raccoon River Valley Trail

Caboose Park is the trail head of the in-town portion of the Raccoon River Valley Recreation Trail. Located across the street from the Welcome Depot, at the intersection of First Avenue (Highway 144) and Willis Avenue, the park continues to evolve and grow to serve the needs of visitors and residents alike.

In 2010, a shelter house was constructed near the Caboose, adjacent to the trail, along with permanent bike lockers donated by the Dallas County Foundation and health related signage in English and Spanish funded by a grant from the Iowa Department of Public Health and the Center for Disease Control.

Perry has completed its section of the 33-mile "North Loop" of the Raccoon Valley Trail.

Trail permits are \$10 per year or \$2 per day and are available through Dallas County Conservation located at 14581 K Avenue, Perry.

Honor system payment boxes are also placed along the trail.

Check [www.raccoonrivervalleytrail.org](http://www.raccoonrivervalleytrail.org) or call 515-465-3577 for trail updates.

## Perry Dog Park

Bring your favorite canines and let them run freely in an environment that is safe and rewarding for all. If you are not traveling with a dog, stop by and watch the fun.

The park, only one of eight in the state of Iowa, is a collaboration between the Perry Humane Society and the Perry Parks and Recreation Department.

Land and monies for the facility were provided by private donors.

The five-plus acre park is fenced and divided into two sections, an area for smaller dogs and one for large dogs. Double gates enable you to move in and out of the park without risk of your canine friend's escape.

The park features several permanent benches, a three-level water fountain (one for dogs, one for children and one for adults) and three pieces of dog-inspired playground equipment.

Daily passes are available at the McCreary Community Building which is open seven days a week.

No children under 14 years will be allowed in the fenced in dog area, and no one under 18 will be permit-

ted to escort a dog into the park.

Each adult is limited to three dogs. No food, whether human or animal, is allowed in the park.

The Park is located at the southwest corner of Pattee Park, south of the ball diamonds, at the end of West 5th Street.

The McCreary Community Building is located at 1800 Pattee Street and can be contacted at 515-465-5621.

## Josh Davis Memorial Plaza

The plaza is located in Perry's Downtown Cultural District.

The space commemorates Lance Cpl. Josh Davis, a young Marine from Perry, who lost his life serving our country in Afghanistan in April, 2010.

Josh Davis Memorial Plaza includes sitting walls, green space, a series of columns to erect dedication plaques, lighting and of course, an American flag.

Josh Davis Memorial Plaza is home to Perry's Farmers Market, held every Thursday, 4 to 7 pm, from May through October.

## McCreary Community Building

The McCreary Community Building, located at 1800 Pattee Street in Perry, has a heated six-lane indoor pool with a shallow play area and diving board, outdoor splash pad and sundeck, whirlpool, dry air sauna, universal weight room, personal fitness room, locker rentals, senior citizens room, kitchen, theater, gymnasium, racquetball/walleyball courts and an indoor stationary bike room.

Designated times are provided for open swimming, adult only swimming and family swimming. Sundays are the designated float days. Programs offered at MCB include Zumba, Pilates, aerobics, spinning, yoga, water fitness, swimming lessons, parent and child swim class, youth sports and more.

Please call the Recreation Department for information on programs, user fees, memberships and hours or visit [www.perryia.org](http://www.perryia.org).

The McCreary Community Building is located at 1800 Pattee Street in Perry. Contact the facility by calling 515-465-5621.

## Wiese Park

Wiese Park is adjacent to the McCreary Community

Building and was completed in the 1990s.

It features a shelter house and gazebo, a nine-hole disc golf course, playground equipment, a lighted two-mile recreation trail, lighted regulation basketball court, soccer fields and sand volleyball courts.

Restrooms are available seasonally. Wiese Park is located at 1800 Pattee Street in Perry. Wiese Park Disc Golf Course

Play a round of disc golf on this challenging nine-hole course. The course features three sets of tees for varied difficulty. The course is open seven days a week to the public at no charge.

Maps and scorecards are available inside the McCreary Community Center.

Golf discs are also available for purchase at the McCreary Community Center.

For further information, call 515-465-5621.

### Pattee Park

Pattee Park, located at West 3rd Street and Willis Avenue, is Perry's largest park.

It features three softball and four baseball fields, sand volleyball court, the City Band Shell, skateboard park, tennis courts, horseshoe pits, playground equipment, the Perry Dog Park and three shelter houses.

Restrooms are available seasonally.

### Perkins Park

Perkins Park, located at West 5th and Dewey Avenue in Perry, is divided by a berm that was once a raised railroad bed.

On the west side is the Hiawatha Bike Trail, natural prairie land and interpretive signs.

The east side contains the youth soccer fields and new playground equipment donated by the City of Dawson. Restrooms are available during soccer season only.

### Veterans Memorial

More often than not, we fail to remember the sacrifices of those who made it possible for the freedoms we enjoy today.

To commemorate fallen veterans of Perry, the local American Legion Post 85, Veterans of Foreign Wars Post 2060 and private individuals dedicated the Perry Veterans Memorial in 1992 to the veterans of all wars and conflicts.

Visit the memorial and reflect upon and appreciate the sacrifices that others have made for the opportunity to live in peace.

The Veterans Memorial is located at Eighth Street and Bateman, west of the McCreary Community Building.



**Proudly Serving  
Perry For Over 40 Years!**

**HyVee**



**Breakfast  
Lunch • Dinner**

**Hy-Vee Bakery**

Made In  
Store Daily,  
Baking Stone  
Breads

**Hy-Vee Meat**

Hy-Vee  
Choice  
ReserveBeef.  
Best In Town!

**Hy-Vee Produce**

Highest Quality,  
Best Tasting,  
100% Freshness  
Guarantee

**HyVee Pharmacy**

Hours: Mon.-Fri. 8-8,  
Sat., 9-5, Sun., 10-5 **515-465-3543**

**1215 141<sup>st</sup> St. • Perry • Ph. 465-5321  
Open 24 Hours For all Your Needs**

### Hiawatha Bike Trail – In-Town Perry Trail

This off-street trail runs from Wiese Park to 8th Street to Willis Avenue to Perkins Park.

The Hiawatha Bike Trail honors Perry’s railroad history and connects all of the city’s parks.

### Perry Parks Shelter Rental

The shelter house and gazebo at Wiese Park and the large shelter house at Pattee Park may be rented for \$30 per day on weekends or \$20 per weekday. Please contact the McCreary Community Building at 515-465-5621 to reserve a shelter.

### Sportsman’s Park

Located one-half mile northeast of Dawson, Sportsman’s Park has 40 acres of oak and hickory timber overlooking the North Raccoon River.

Visitors may enjoy fishing, hiking along nature trails, picnicing and camping.

Modern restrooms, playground equipment and new camping cabins are also available.

### Dallas County Conservation

Dallas County Conservation provides a wide variety of recreational, educational and cultural opportunities and has more than 3,000 acres and 18 sites consisting of parks, museums, wildlife areas and hiking and recreational trails, including water trails.

The conservation board headquarters are located at 14581 K Avenue in Perry. Call 515-465-3577 or visit [www.conservation.co.dallas.ia.us](http://www.conservation.co.dallas.ia.us) for information.

### Perry Golf & Country Club

Perry Golf & Country Club is located one mile north of Perry at 352 330th Street. This nine-hole course boasts watered fairways, manicured greens, fine dining, a variety of social events and a rapidly growing membership.

Open golf for non-members within a 30-mile radius is available on Mondays. Open golf for non-members outside of the 30-mile radius is available anytime the course is not reserved. Open green fees for everyone is offered during the months of April, September and October

Please call 515-465-3852 or visit [www.perrygolf.com](http://www.perrygolf.com) for more details.

### Perry High School Driving Range

The Perry High School Driving Range is located in the northwest corner of the Perry Athletic Complex on 18th Street, north of the Perry Community High School.

The driving range opens at 8:00 a.m. until sundown, seven days a week unless adverse conditions prevail.

Open hours available to the public vary during the golf season when the facility is used as a practice site for the high school boys and girls golf teams. Cost is \$3 per bucket. Call 515-465-4656 for more information.

### Raccoon River Water Trails

Find a canoe, kayak, rubber raft or inner-tube and enjoy an afternoon floating down the Raccoon River. Beautiful sand bars, eagles, deer and giant cottonwood trees drift by on one of the most relaxing trips you can take in Central Iowa. Boat ramps are located at the west end of Willis Avenue as well as south on P58 (First Avenue), immediately to the east after crossing the Raccoon River bridge.

For Information regarding the Raccoon River Water Trails, visit <http://www.iowadnr.gov/Recreation/CanoingKayaking/WaterTrails.aspx>.

### Campgrounds

- Pattee Park, Perry - Camping in Pattee Park is limited to five days. The park has electric hookups and a dump station. Campers must register with the Perry Police Department at 908 Willis Avenue. Call (515) 465-4636 for additional information.

- Spring Brook State Park, Guthrie County - Located north of Guthrie Center, Spring Brook State Park has electric hookups and showers available. For more information, call (641) 747-3591 or visit <http://www.iowadnr.gov/Destinations/StateParksRecAreas/Iowa-StateParks.aspx>

- Don Williams Lake and Campground, Boone County - Located north of Ogden, at 610 H Avenue, Don Williams Lake has electric hookups and showers available. Call (515) 353-4237 or visit <http://www.co.boone.ia.us> for information.

- Spring Lake Park, Greene County - Located northwest of Grand Junction, Spring Lake Park has electric hookups and showers available. Call (515) 386-5674 or visit <http://www.co.greene.ia.us/conservation/conservation.htm> for details.

- Sportsman’s Park, Dawson - Camping is limited to two weeks. The park has electric hook-ups, modern restrooms, but no showers. Two camping cabins are also available. Call 515-465-3577 or visit [www.conservation.co.dallas.ia.us](http://www.conservation.co.dallas.ia.us) for information.





# Calendar of Events

The events, location, dates, and times presented in this guide may change. Additional events may be added throughout the year. We invite you to visit our website, [www.perryia.org](http://www.perryia.org), for event changes and additional attractions.

## FEBRUARY 2018

### February 3

#### **BRR – Bike Ride to Rippey**

BRR is a 24-mile round trip bike ride from Perry to Rippey and back to Perry. The ride continues no matter what the weather! BRR is also known as the “Original WINTER Ride” as well as the “Winter RAGBRAI Reunion.” The BRR event attracts thousands of riders that attend from all over Iowa and the country. Breakfast 7 - 10:30 a.m.; Registration 8 – 10 a.m. Visit [www.perryia.org](http://www.perryia.org) or [www.bikeiowa.com](http://www.bikeiowa.com) or call 515-465-4601 for updates.

### February 10

#### **Chocolate Walk for the Perry area from 10 a.m. – 4 p.m.**

Ooo-la-la... Heavenly Chocolate! The Perry area merchants hosts an annual Chocolate Walk the Saturday

prior to Valentine’s Day, from 10 a.m. to 4 p.m. Chocolate Walk participants will sample a luscious chocolate treat at each participating store, while visiting Perry’s great array of shops and restaurants.

Contact the Perry Area Chamber of Commerce at 515-465-4601 for tickets prior to the walk.

### February TBD

#### **Kiwanis Pancake Day at the McCreary Community Building from 7 a.m. to 7 p.m.**

The annual Pancake Day is a fundraiser for the local Kiwanians to assist with local scholarships & kids programs. Pancakes & Junior and Senior Class bake sale all day long!

## MARCH 2018

### March 31

#### **Easter Egg Hunt at Wiese Park starting at 10:30 a.m.**

Meet the Easter Bunny, collect eggs & candy and gather as many “Special Eggs” with prizes! 515-465-5621.

## APRIL 2018

### April TBD

#### **Fireworks Drive - Listen to KDLS Radio Visit the Downtown Drop Off Location from 7 a.m. – 2 p.m.**

The Chamber of Commerce, KDLS Radio and the Perry Chief will host the July 4th Fireworks “Drive” located on Railroad Street by the Perry Public Library on Thursday, April 7th. Make a contribution to Perry’s 4th of July Fireworks by calling KDLS during our LIVE broadcast or stop by the Railroad Street live location. Call 515-465-5357.

### April 17 (Tentative)

#### **Perry Chamber Annual Dinner**

Annual dinner to honor those who receive the Business of the Year award and the Volunteer of the Year award.

## WhereStyleHasNoLimit™



Since 1993, our full service salon has been providing... Quality Service in a Friendly Atmosphere & the Latest Trends. We are family oriented & welcome...The Young & Young at Heart, Conservative to Trendy!

**Tanning Beds & Booth/Single Sessions & Pkgs. Appts. not always needed.**

Perms • Cuts & Styles  
Highlights • Colors  
Low Lights • Ear Piercing  
Manicures & Shellac  
Facial Waxing

## Styles Unlimited

Kenra  
Its A 10  
American Crew  
Matrix & More

Visit our Facebook page

501 1st Street, Perry, IA (Alco Plaza)  
515-465-4360 [www.styles-unlimited.com](http://www.styles-unlimited.com)  
Mon. 10-6 Tues. 9-7 Wed. 9-7:30 Thurs. 9-9 Fri. 9-5 Sat. 8-2 / 8-4



**April TBD**

**Friends of the Library Book Sale at the Perry Public Library**

Friday 10 a.m. – 4 p.m., Saturday 10 a.m. - 2 p.m. Call 515-465-3569.

**MAY 2018**

**May 4-5**

**Antique Days**

Come to downtown Perry's Cultural District and enjoy antiques and collectibles from a variety of vendors. There is something for everyone!

**May TBD**

**Recognition of Historic Preservation Volunteers at Carnegie Library Museum.**

Program recognizing efforts of volunteers working to preserve Perry's history.

**May TBD**

**Friends of the Library Plant Sale at the Perry Public Library**

Friday 10 a.m. – 4 p.m. & Saturday 10 a.m. – 2 p.m. Donations accepted. Call 515-465-3569.

**JUNE 2018**

**June 2 (Tentative)**

**Perry Kids' Fest at the Carnegie Library Museum & Perry Public Library**

**10:00 a.m. – 4:00 p.m.**

Games, activities, and fun for the whole family!

**June TBD**

**The Memorial Run at 8:00 a.m.**

This 5k fun race is for everyone! Join the walk/run/roll to continue the memory of a loved one. For more information contact the McCreary Center at 515-465-5621.

**JULY 2018**

**July 4**

**Perry's Fourth of July Celebration**

Take part in Perry's patriotic celebration that begins with the parade at Noon followed by arts, crafts, food vendors and family activities in Pattee Park. Enjoy water fights, bingo, miniature golf, kid's games, & live entertainment at the Pattee Park band shell, followed by our magnificent display of fireworks! Keep up to date with the events at [www.perryia.org](http://www.perryia.org).

**July 4**

**Perry Fine Arts: 40th Annual Musical Extravaganza & Ice Cream Social at the First United Methodist Church at 2 p.m.**

Free Will Offering.

**July TBD**

**Friday Fest, Music in the Pattee Park 6:30 p.m. - 9:30 p.m.**

Bring your picnic basket, cooler, and lounge chairs to enjoy music in Pattee Park! For updated information visit [www.perryia.org](http://www.perryia.org) or call 515-465-4601.

**July TBD**

**PADDLEFEST "Save the Raccoon":**

Raccoon River Watershed Association

Canoe or Kayak down Raccoon River and assist with saving the Raccoon – an all day event! For more information on event activities, visit [www.northraccoon.org](http://www.northraccoon.org) for finalized dates. Call 515-277-3279.





*Perk up your day and make your taste buds smile!*

- Coffees & Teas
- Sandwiches
- Quiche • Soup
- Pastries

[perryperkcoffee@gmail.com](mailto:perryperkcoffee@gmail.com)  
 1218 2nd Street • Perry  
 (Next to Perry Paint & Design)  
**515-897-8035**

**AUGUST 2018**

**August 3-4**

**Hwy 141 Garage Sale beginning at 8:00 a.m.**

On Hwy. 141 from Grimes to Sloan. The towns, residents, and businesses along Highway 141 in Iowa, welcome you to the annual 141 Garage Sale & Flea Market event on the first full weekend of August. This two day event should prove to be enjoyable for everyone! Visit [www.141sale.com](http://www.141sale.com) for details.

**August TBD**

**Muddfoot Riverbillies, Carp fishing tournament 8:00a.m. – 6:00 p.m.**

Fishing from Hwy 30 to Hwy 6. Sing up at Pattee Park 6:30-7:30a.m. Weigh in at Pattee Park Noon- 5:30pm Proceeds go to cystic fibrosis research. [www.muddfoot-riverbillies.com](http://www.muddfoot-riverbillies.com)

**OCTOBER 2018**

**October TBD**

**Friends of the Library Book Sale at the Perry Public Library**

Friday 10 a.m. – 4 p.m., Saturday 10 a.m. - 2 p.m. Call 515-465-3569.

**October TBD**

**Halloween SPOOK-tacular in the Downtown Cultural District 4 p.m. - 6 p.m.**

The event is a ghostly fun Halloween celebration with safe trick-or-treating on Second Street downtown for hundreds of children.

**October TBD**

**Safe and Healthy Halloween at Dallas County Hospital from 5:30 - 7 p.m.**

Enjoy an evening of safe and healthy trick-or-treating through the halls of Dallas County Hospital. With an array of giveaways, events and prizes, you are sure to enjoy this one of a kind Halloween experience. For more information call 515-465-7516.

**October TBD**

**City-wide Trick or Treating from 6 - 8 p.m.**

Be sure to look for homes with their lights on for locations to take your little goblins to collect their holiday treats for a trick!

**NOVEMBER 2018**

**November 6**

**Chamber’s Election Day Chili Feed at the McCreary Community Building from 11 a.m.- 7:30 p.m.**

This promotion is designed to encourage people to get out and vote! It also serves as an excellent public relations and fundraiser for the local chamber. \$6.00 all you can eat and get a slice of pie for \$2. Visit [www.perryia.org](http://www.perryia.org) or call 515-465-4601.

**November 9 (Tentative)**

**Veterans Day Celebration at the Perry High School**

Morning Refreshments in Brady Library at 8:15 a.m.; Veterans Day Presentation in PHS Gym at 8:45 a.m.; Veterans Day Celebration assembly in PHS Gym at 10:10 a.m.; Veterans Day Luncheon in Brady Library at 11:11 a.m. RSVP is requested for lunch, call 515-465-3503.

**November TBD**

**Holiday Open House in the Downtown Cultural District**

The downtown area stores will host their annual Holiday Open House with festive specials, gift ideas, refreshments & door prizes. Enjoy the sights, sounds & smells of the Holidays in Perry!

**Iowa Artisans • Vintage Lagomarcino Chocolates Isabel Bloom • Polish Pottery Stained Glass • Hand Spun Yarn**



**mary rose**  
antiques & art gallery  
1215 Warford • Perry Iowa  
515.465.4222 • [www.maryrosecollection.com](http://www.maryrosecollection.com)

**November 10-11**

**Art on the Prairie at Hotel Pattee, LaPoste, Town Craft, Security Bank Building, DMACC, Perry Public Library and Carnegie Library**

Perry has been designated both a Historic District and Cultural District. The historical Hotel Pattee, renovated to its original Arts & crafts charm and itself home to art by more than thirty artists, is a fitting backdrop for Perry's Art on the Prairie Art Festival ... along with five other buildings in the same block will also house the exhibits: For more information, visit [www.artontheprairie.org](http://www.artontheprairie.org).



**November 17**

**Holiday Craft Show at McCreary Community Center from 9 a.m. - 3 p.m.**

Enjoy a community craft show featuring artisans and crafters from all over Iowa. Craft show will include seasonal decor and crafts. Vendors call 465-5621.

**November 23**

**Lighted Christmas Parade in the Downtown Cultural District. Float line-up at 6 p.m. and Parade at 7 p.m.**

Enjoy the Lighting of the Community Christmas Tree, carolers and lighted floats all decked out in holiday lights for the season. Then join Santa for hot chocolate and cookies following the parade at LaPoste.



**DECEMBER 2018**

**December TBA**

**Las Posadas at St. Patrick's Catholic Church 6 p.m.**

Las Posadas, "the passage," is a traditional Hispanic Christmas celebration that re-enacts Joseph and Mary's search to find room at the inn for the baby Jesus to be born. Procession starts at 6 p.m. followed by Fiesta. Call Hispanics United for Perry (HUP) at 515-490-2298.

**December 25**

**Free Community Christmas Dinner at the Perry Elks Lodge from 11 a.m. - 2 p.m.**

Open to all a holiday meal for you and your loved ones, please join us at the Perry Elks Lodge for a Free Christmas Dinner and socializing. Dessert or salad donations appreciated; call 465-3740. To volunteer for 24th or 25th call 515-465-4114.

**Great Western Bank**  
Making Life Great®

Perry: 1111 141st St • 515.465.3187  
[GreatWesternBank.com](http://GreatWesternBank.com)

AF0001010487-01



**YOU ARE ONLY** YOU ARE ONLY A FEW STEPS AWAY FROM  
**DALLAS COUNTY HOSPITAL'S**  
**EXPERIENCED TEAM WORKING CLOSELY**  
**TOGETHER TO PROVIDE**  
**QUALITY CARE!**

**A  
FEW  
STEPS  
AWAY**



OVER 25 VISITING SPECIALTIES  
CARDIAC & PULMONARY REHAB SERVICES  
PHYSICAL, OCCUPATIONAL, AND SPEECH THERAPY  
WALK-IN WELLNESS SCREENINGS  
SOMNITECH ACCREDITED SLEEP STUDIES  
MULTIPLE HEALTH EDUCATION CLASSES

**DALLAS COUNTY HOSPITAL**  
For more information visit our website at [www.dallascohospital.org](http://www.dallascohospital.org)



# Advertiser's Index

Alice's Haus Dresin, Ltd.	31
Anytime Towing	28
Art on the Prairie	10
Ben's Five & Dime	5
Betsy Peterson Design	22
City of Perry	17
Dallas County Conservation Board	23
Dallas County Hospital	44
Family Credit Union	21
Fareway	Back Cover
Great Western Bank	43
Hastings Funeral Home	32
Hotel Pattee	20
Hy-Vee	37
La Poste	33
Mandarin Café	26
Mary Rose Gift Shop	42
Medicap Pharmacy	29
Newbury Living	7
Perry Chamber	2
Perry Perk	41
Peters Service Center	45
Raccoon River Valley Bicycle	25
Raccoon Valley Bank	9
Rainbow International Restoration	24
Roberts-Smile Agency	19
Rowley Masonic Community	13
Scottish Fox, The	27
Spring Valley Assisted Living	30
Styles Unlimited	40
Wuebker's Auto Body Shop LLC	12

For Your Convenience!

- Private Entries
- Concrete Floors
- Several Sizes & Prices

- 24 Hour Access
- Lighted Inside & Out
- Automatic Touch Free Car Wash



4 Season MiniStorage & Car Wash

3001 East Willis Avenue • 515-465-5651

"Automatic, Touch Free"



West End Car Wash

301 West Willis Avenue

- Coin Operated Laundry
- Oversized Washers

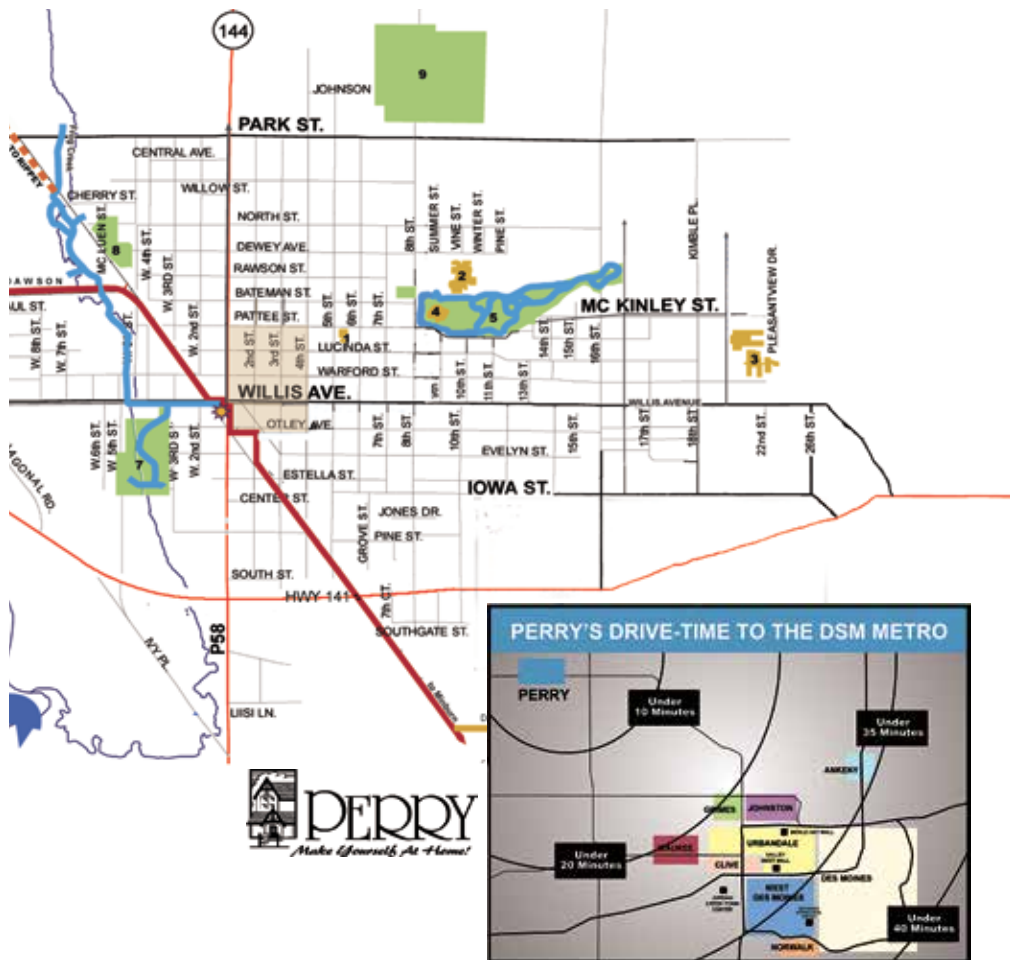
- Drop Off
- Laundry Services

• Open Daily, 6 am-8 pm



Perry Washall

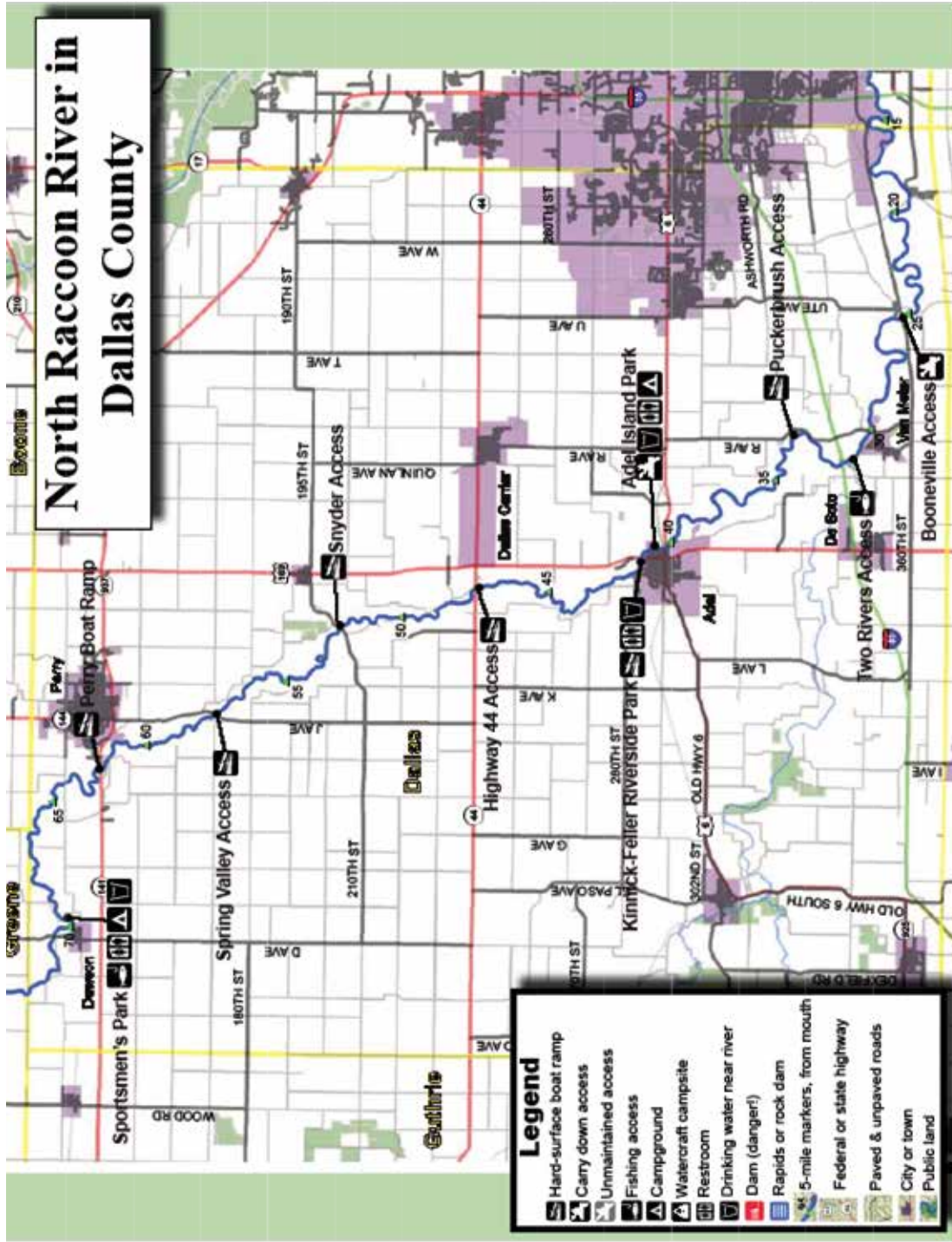
1121 First Avenue • 515-465-4349



## The Raccoon River Valley Trail Map



# North Raccoon River in Dallas County



**Legend**

- Hard-surface boat ramp
- Carry down access
- Unmaintained access
- Fishing access
- Campground
- Watercraft campsite
- Restroom
- Drinking water near river
- Dam (danger!)
- Rapids or rock dam
- 5-mile markers, from mouth
- Federal or state highway
- Paved & unpaved roads
- City or town
- Public land

*Shield of Quality*



Copyright©2015

# YOUR FULL SERVICE GROCERY STORE

*Featuring Every Day Low Prices  
on National Brand Items and Friendly  
To Your Car Carry Out Service.*

*Your Full Service Meat Department  
Features the Finest USDA Choice Beef, Farm  
Fresh Poultry, Seafood and All Natural Pork  
Cut Fresh Daily!*



## ALL FOR YOUR SHOPPING CONVENIENCE!

**Open 8 am to 9 pm  
Monday Thru Saturday  
Closed Sunday**

**Grocery Manager  
Travis Landgrebe  
515-465-3411**

**Meat Manager  
Mike Trotter  
515-465-4044**